

County Road 20 (King Street East)

I want to...



2021 Aer...

0 0 50 100m

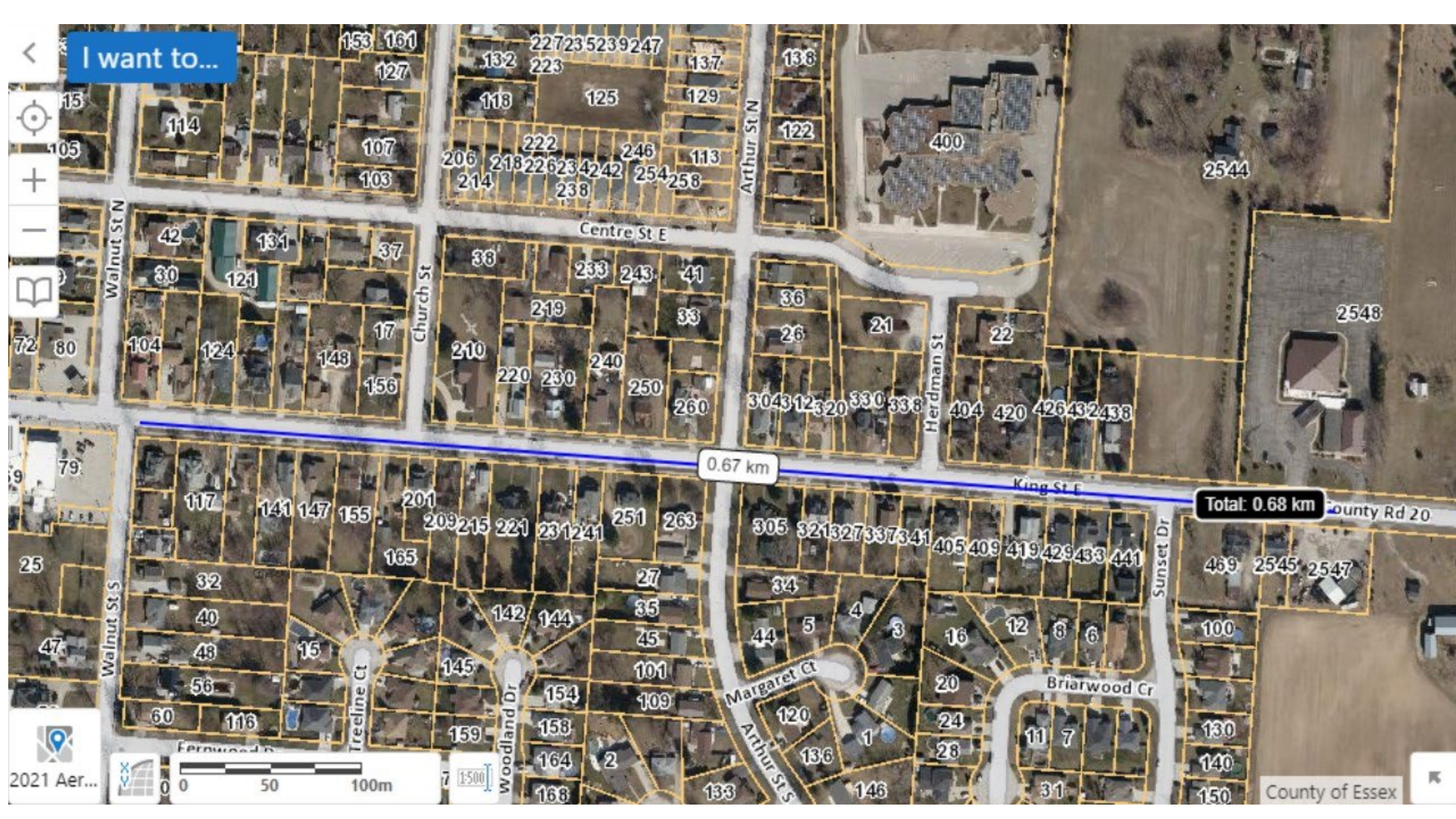
1:500

0.67 km

Total: 0.68 km

County Rd 20

County of Essex





I want to...



438

Total: 10.43 m

10.36 m

King St E

Total: 0.08 m

County Rd 20

Sunset Dr



2021 Aer...



433



1:500

441

County of Essex

- County Road 23 bridge replacement at the south branch of Cedar Creek, Essex and Kingsville
- County Road 50 bridge rehabilitation at Wigle Creek, Kingsville
- County Road 12 culvert replacement at Essex Outlet Drain, Essex
- County Road 8 culvert replacement at the Cameron Curry Drain, Lakeshore and Kingsville
- County Road 9 (County Road 20 to South Side Road) pavement rehabilitation, Amherstburg
- County Road 11 (one kilometre south of South Talbot to Highway 3) pavement rehabilitation, Tecumseh
- County Road 11 (County Road 18 to County Road 12), pavement rehabilitation, Amherstburg and Essex
- County Road 20 (100 metres east of Sunset to Ferriss Road) pavement rehabilitation, Essex
- County Road 29 (South Talbot to County Road 34) pavement rehabilitation, Kingsville
- County Road 46 (Rochester Townline to County Road 31) pavement rehabilitation, Lakeshore
- County Road 50 (Concession 7 to Collison Sideroad) pavement rehabilitation and paved shoulder, Amherstburg
- County Road 2 (Maple Avenue to St. Clair Road), pavement rehabilitation, Lakeshore
- County Road 8 (County Road 15 to County Road 19) pavement rehabilitation, Tecumseh and Essex
- County Road 14 (County Road 1 to County Road 37) pavement rehabilitation, Leamington
- County Road 18 (County Road 11 to County Road 9) pavement rehabilitation and paved shoulder, Amherstburg
- County Road 37 (Mersea Road 6 to Mersea Road 7) pavement rehabilitation, Leamington
- County Road 37 (South Middle Road to County Road 46) pavement rehabilitation, Lakeshore

		Tecumseh/Essex	2.5 km	
194	CR 14	Pavement Rehabilitation CR 1 to CR 37 Leamington	Deteriorated Pavement Overlay (HM) 3.7 km	\$470,000
195	CR 18	Pavement Rehabilitation CR 11 to CR 9 Amherstburg	Deteriorated Pavement Overlay (HM) 2.5 km	\$330,000
896	CR 18	Paved Shoulder (Amh-1) CR 11 to CR 9 Amherstburg	PS with Rehab #195 2.5 km	\$500,000
196	CR 18	Pavement Rehabilitation Coulter to CR 11 Essex	Deteriorated Pavement Overlay (HM) 5.9 km	\$800,000
897	CR 18	Paved Shoulder (Ess-1) Coulter to CR 11 Essex	PS with Rehab #196 5.9 km	\$900,000
197	CR 37	Pavement Rehabilitation Mersea Rd 6 to Mersea Rd 7 Leamington	Deteriorated Pavement Overlay (HM) 1.4 km	\$220,000
198	CR 37	Pavement Rehabilitation South Middle Road to CR 46 Lakeshore	Deteriorated Pavement Overlay (HM) 1.3 km	\$170,000
199	CR 42	Pavement Rehabilitation CR 35 to Rochester Townline Lakeshore	Deteriorated Pavement Overlay (HM) 3.7 km	\$550,000
200	CR 46	Pavement Rehabilitation CR 23 to Lakeshore Rd 203 Lakeshore	Deteriorated Pavement Overlay (HM) 3.6 km	\$510,000
201	CR 5	Pavement Rehabilitation Texas Road to CR 10 Amherstburg	Deteriorated Pavement Mill and Pave 2.1 km	\$310,000
202	CR 50	Pavement Rehabilitation CR 13 to Dunn Road Essex	Deteriorated Pavement Mill and Pave 0.75 km	\$160,000
203	CR 50	Pavement Rehabilitation Dunn Road to Dahinda Essex	Deteriorated Pavement CIR and Pave 1.3 km	\$390,000
898	CR 50	Pavement Rehabilitation Dunn Road to Dahinda Essex	PS with Rehab #203 1.3 km	\$250,000
899	CR 50	Utility Relocation CR 41 to 7th Conc. Essex	PS with future Rehab 4.7 km	\$300,000



I want to...



Basemaps



0 0.3 0.6km

1:500

County of Essex





We need to jump on this opportunity and not let it pass us by.

- Can we expect council to approve the recommendation to receive a quote for this project and initiate the Connecting Link By Law with The Corporation Of The County Of Essex.
- Utilize any funds from favourable tenders for Capital projects this year to fund this project.