



PUBLIC HEALTH MEMO

COVID-19

This is a stakeholder update for the week of March 8 to March 14, 2021.

Submitted on March 15, 2021.

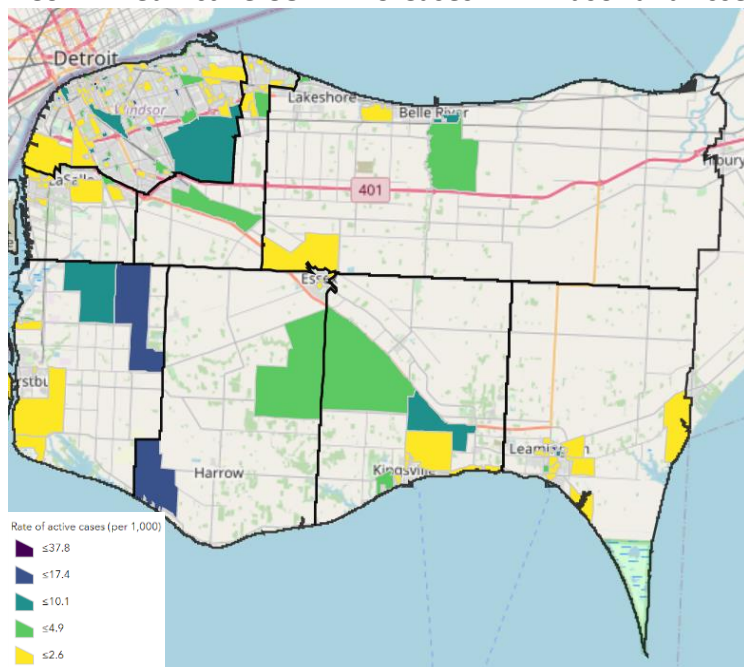
Current Statistics

For all up-to-date data and information, please visit the [Local Updates](#) page on our website, which includes the local COVID-19 Dashboard. Daily local public health live updates and weekly summary reports can also be found on the [WECHU YouTube Channel](#).

Case Counts in Windsor and Essex County

Confirmed Cases	Deaths	Resolved Cases
13,413 (↑8)	398	12,723
Current LTC & RH Outbreaks	Current Workplace Outbreaks	Current Community Outbreaks
4	4	3
Current School Outbreaks		
		3

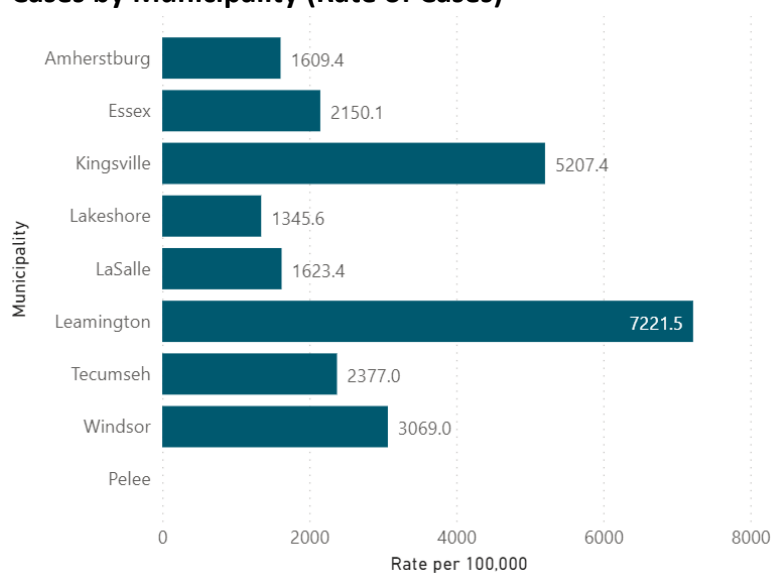
Confirmed Active COVID-19 Cases in Windsor and Essex County



The map reflects the number of active positive COVID-19 cases per 1000 residents. Please note that this does not reflect where the cases were infected, but rather where they reside. Cases may have been exposed to COVID-19 outside of their home or in other settings.



Cases by Municipality (Rate of Cases)



Federal, Provincial and Local Guidelines and Recommendations (Updates)

Federal

- Public Health Agency of Canada [Statement from the Chief Public Health Officer of Canada on March 14, 2021](#), which highlighted an increase in stigma associated with COVID-19 in addition to the weekly COVID-19 update.
- On March 12, 2021, the Honourable Patty Hajdu, Canada's Minister of Health, announced an [investment of approximately \\$25.2 million in 52 research projects to further improve our understanding of COVID-19 and tackle persistent evidence gaps](#) linked to this disease.
- NACI rapid response: [Extended dose intervals for COVID-19 vaccines to optimize early vaccine rollout and population protection in Canada](#), March 8, 2021.

Provincial

- As of Friday, March 12, over 325 [pharmacies will be offering the AstraZeneca/COVISHIELD vaccine](#) to eligible Ontarians aged 60-64, by appointment only, as part of the vaccine delivery pilot program in specific regions.
- Ontario Marks [One Year Anniversary of COVID-19 Pandemic](#) on March 11, 2021.

Windsor-Essex

- News Release: [Residents 80 Years of Age and Older to Continue to Use Local Pre-Registration Form for COVID-19 Vaccination](#)
- [Windsor Regional Hospital is closing one of its two COVID-19 Assessment Centres](#), amid consistently lower volumes of individuals seeking tests for the virus.
- As of March 15, 2021, there are four long-term care and retirement home outbreaks, four workplace outbreaks, three community outbreaks, three school outbreaks, and one hospital outbreak in the Windsor-Essex region. For more information on outbreaks, please visit the [WECHU website](#).
- The WECHU has issued a public exposure notification for the following locations: Real Canadian Superstore at 201 Talbot St E, Leamington and Starbucks at 6638 Tecumseh Road East. Although the potential exposures listed on the WECHU's [Public Exposure Notification page](#) are considered low risk, individuals who visited these locations on the identified dates are asked to monitor themselves for symptoms of COVID-19 for 14 days from the date of exposure.



Vaccine Clinic Updates

Vaccinations Administered to Windsor-Essex Residents

# of WEC Residents Vaccinated with 1 Dose	# of WEC Residents Vaccinated with 2 Doses	Total Doses Administered
20,626	11,854	44,334

- Residents 80 years of age and older can attend a vaccination clinic in Windsor or in Leamington.
- Residents aged 60 to 64 can be vaccinated at a pharmacies participating in a pilot program.

Guidance Documents

A list of all guidance documents from the Province of Ontario, and the Windsor-Essex County Health Unit (WECHU) can be found on the [Guidelines](#) page of the WECHU website.