



# PUBLIC HEALTH MEMO

## COVID-19

This is a stakeholder update for the week of January 4, 2021.

### Current Statistics

For all up-to-date data and information, please visit the [Local Updates](#) page on our website, which includes the local COVID-19 Dashboard. Daily local public health live updates and weekly summary reports can also be found on the [WECHU YouTube Channel](#).

#### Case Counts in Windsor and Essex County

##### Confirmed Cases

8,502 (↑202)

##### Deaths

167

##### Resolved Cases

5809

##### Current LTC & RH Outbreaks

20

##### Current Workplace Outbreaks

16

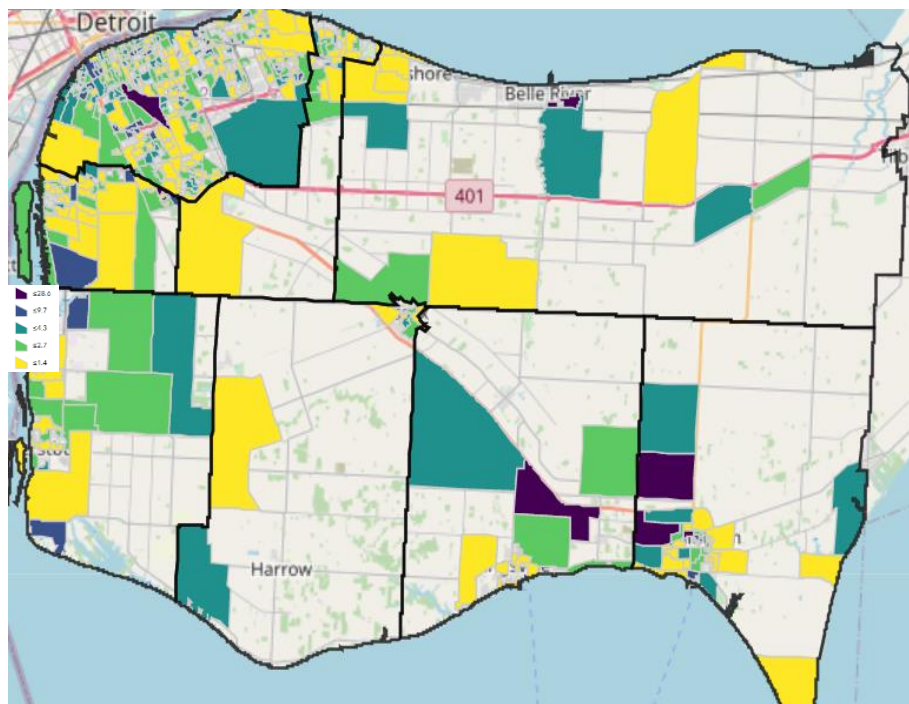
##### Current Community Outbreaks

2

##### Current School Outbreaks

2

#### Confirmed Active COVID-19 Cases in Windsor and Essex County



*The map reflects the number of active positive COVID-19 cases per 1000 residents. Please note that this does not reflect where the cases were infected, but rather where they reside. Cases may have been exposed to COVID-19 outside of their home or in other settings.*



## Federal, Provincial and Local Guidelines and Recommendations (Updates)

### Federal

- Effective January 7, 2021, all passengers five years of age or older are required to test negative for COVID-19 before travelling by air from another country to Canada. It will be required to provide written or electronic documentation showing they received a negative result from a COVID-19 molecular polymerase chain reaction (or PCR) test conducted within 72 hours prior to boarding a flight to Canada. Individuals travelling from a country where PCR testing is unavailable will be required to report to a designated Public Health Agency of Canada quarantine facility for the duration of their mandatory 14-day quarantine.

### Provincial

- Developed in partnership with the COVID-19 Vaccine Distribution Task Force, the Ontario government has released an [Ethical Framework](#) for COVID-19 vaccine distribution. The Ethical Framework includes the following principles to guide COVID-19 vaccine distribution: Minimize harms and maximize benefits, equity, fairness, transparency, legitimacy, and public trust. “We know that people are eager to get vaccinated and this framework helps ensure that we do it in an ethical, effective and compassionate way,” said General Risk Hillier (retired), Chair of the COVID-19 Vaccine Distribution Task Force.

### Windsor-Essex

- As of January 4, 2021, there are 20 long-term care and retirement home outbreaks, 16 workplace outbreaks, two community outbreaks, two school outbreaks, and two hospital outbreaks in the Windsor-Essex region. For more information on outbreaks, please visit the [WECHU website](#).
- Details about cases at specific schools can be found on the websites of the corresponding school boards; please see the following for the direct links to the outbreak tracking pages by local school board: [Windsor-Essex Catholic District School Board](#), [Greater Essex County District School Board](#), [Conseil Scolaire Viamonde](#), [Conseil Scolaire Catholique Providence](#).
- Working with local Long Term Care Homes and Retirement Homes (LTCH/RH), the Windsor-Essex County Health Unit (WECHU) has started administering the Moderna vaccine to residents and caregivers of LTCHs, and will start administering the vaccine to residents and caregivers of RHs. The WECHU is working on how to move forward with vaccinating LTCH/RHs currently in outbreak.
- With in-hospital admissions of patients with COVID-19 continuing to rise at an alarming rate and potential shortage of available acute care beds, both Windsor Regional Hospital and Erie Shores HealthCare are postponing all non-urgent, pre-scheduled elective surgeries for an indefinite period, effective January 4, 2021.

### Guidance Documents

A list of all guidance documents from the Province of Ontario, and the Windsor-Essex County Health Unit (WECHU) can be found on the [Guidelines](#) page of the WECHU website.

- Ministry of Health Version 1 [COVID-19 Guidance: Considerations for Rapid Antigen Screening](#)