



PUBLIC HEALTH MEMO

COVID-19

This is a stakeholder update for the week of December 14th.

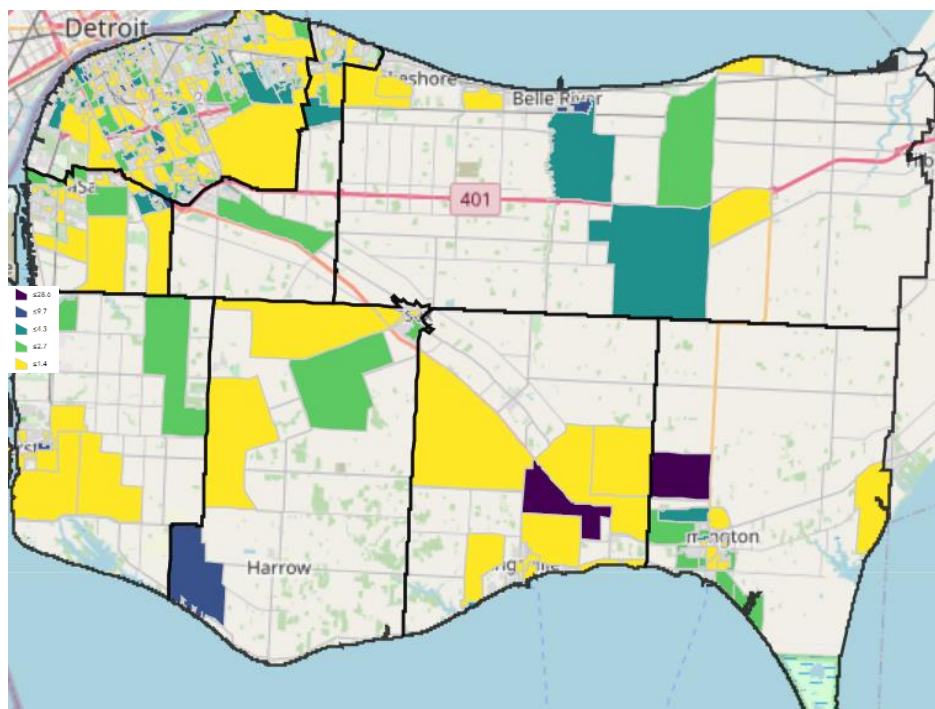
Current Statistics

For all up-to-date data and information, please visit the [Local Updates](#) page on our website, which includes the local COVID-19 Dashboard. Daily local public health live updates and weekly summary reports can also be found on the [WECHU YouTube Channel](#).

Case Counts in Windsor and Essex County

| | | |
|--|---|---|
| Confirmed Cases 4,763 (↑195) | Deaths 91 | Resolved Cases 3893 |
| Current LTC & RH Outbreaks 7 | Current Workplace Outbreaks 9 | Current Community Outbreaks 2 |
| | | Current School Outbreaks 2 |

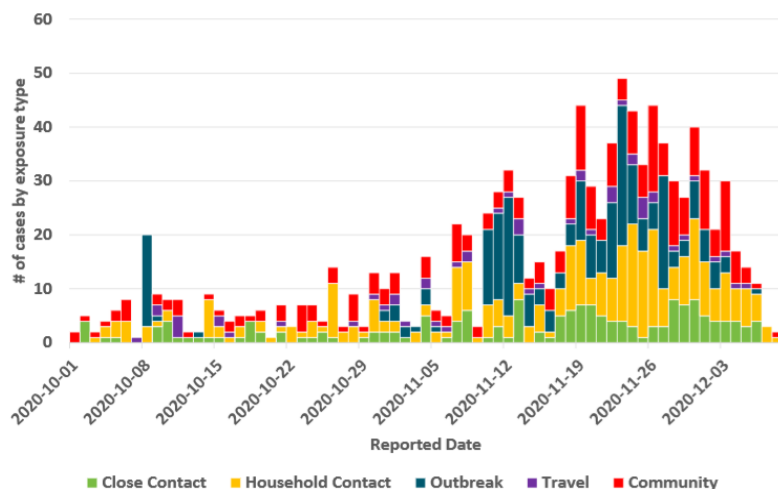
Confirmed Active COVID-19 Cases in Windsor and Essex County



The map reflects the number of active positive COVID-19 cases per 1000 residents. Please note that this does not reflect where the cases were infected, but rather where they reside. Cases may have been exposed to COVID-19 outside of their home or in other settings.



Exposure History by Reported Date (October to Present)



Federal, Provincial and Local Guidelines and Recommendations (Updates)

Federal

- In collaboration with provinces and territories, the Public Health Agency of Canada (PHAC) is implementing a [pan-Canadian no-fault vaccine injury support program](#) for all Health Canada approved vaccines. The program will ensure that all Canadians have fair access to support in the rare event that they experience an adverse reaction to a vaccine.
- Health Canada has authorized the [Pfizer-BioNTech vaccine](#), determining that it meets the Department's safety, efficacy and quality requirements for use in Canada. Health Canada and the PHAC will closely monitor the safety of the vaccine once it is on the market and will take action if any safety concerns are identified. Until further clinical trials, the initial indication of the vaccine is for use in people 16 years of age or older. Pfizer-BioNTech will be providing Canada with up to 249,000 early doses of their COVID-19 vaccine in December. The process of vaccine rollout is detailed in [Canada's COVID-19 Immunization Plan](#).
- Additional supports for children and families were announced through the [Canada Child Benefit](#). The Government of Canada is proposing new temporary support of up to \$1,200 per child under the age of six to further assist families with young children.

Provincial

- The Ontario government is ready to distribute COVID-19 vaccines as soon as they are received. The province has identified key populations to receive the vaccine first, including residents, staff, essential caregivers, and other employees of congregate living settings that provide care for seniors, health care workers, adults in Indigenous communities, and adult recipients of chronic home health care.
- Phase One of [Ontario's three-phase implementation plan](#) to receive, store and administer COVID-19 vaccines to Ontarians will begin on Tuesday, December 15, 2020. Through a pilot project in Toronto and Ottawa, over 2,500 health care workers will be vaccinated with the Health Canada approved Pfizer-BioNTech vaccine. This pilot program will help inform Ontario's preparedness plan to receive larger vaccine quantities.
- Over \$3.5 million is being invested to help more than 700 businesses in the Ontario agri-food sector establish or expand their online presence. See the [list](#) of approved and contracted projects for these grants.



- All orders currently in force under the *Reopening Ontario (A Flexible Response to COVID-19) Act, 2020* ([ROA](#)) have been extended until January 20, 2021. This extension will support the safe delivery of health care and other critical services until COVID-19 vaccines are widely available.
- To support jobs at local restaurants, bars, breweries, wineries and distilleries, the province is now permanently allowing licensed restaurants and bars to include alcohol with food as part of a takeout or delivery order. [Learn more about AGCO's licensing changes.](#)

Windsor-Essex

- There are currently no [possible public exposures](#) identified by the Windsor-Essex County Health Unit (WECHU).
- As of December 14, there are seven long-term care and retirement home outbreaks, nine workplace outbreaks, two community outbreaks, two school outbreaks, and one hospital outbreak in the Windsor-Essex region. For more information on outbreaks, please visit the [WECHU website](#).
- Due to the rapid rise in COVID-19 cases in Windsor and Essex County, Windsor-Essex County Health Unit's Medical Officer of Health, Dr. Wajid Ahmed, has issued a [Section 22 Order](#) under the [Health Protection and Promotion Act](#) (HPPA) to suspend all in-person student learning and before/after school programs effective December 14, 2020 until 12:01 a.m., December 19, 2020. Schools will remain open for educators, staff, and for full time day cares only. An extension of this order may be considered based on COVID-19 epidemiological data for Windsor and Essex County.
- Due to the increase in local active COVID-19 cases, effective 12:01 am on Monday, December 14, Windsor and Essex County moved into the **Grey – Lockdown Level** of the Province of Ontario's [COVID-19 Response Framework](#) :



Lockdown (maximum measures) - grey **Public Health Measures**

Widescale measures and restrictions, including closures, to halt or interrupt transmission (modified Stage 1 or pre-Stage 1).

In addition to the measures under provincial regulations, the Windsor-Essex County Health Unit's Medical Officer of Health, Dr. Wajid Ahmed, has issued [additional restrictions for the region](#) to control the spread of COVID-19.

Taking into account new provincial measures and the WECHU's instructions, a summary of key enhanced measures for Windsor and Essex County include:

| General Public Health Measure | |
|---|--|
| COVID-19 Response Framework: Grey – Lockdown Level | WECHU – Specific Enhanced Measures |
| <p>There are no organized public events and social gatherings permitted, except with members of the same household.</p> <p>Limit for outdoor organized public events and social gatherings is:</p> <ul style="list-style-type: none"> • 10 people outdoors | <p>General Instructions for residents:</p> <ul style="list-style-type: none"> • Zero tolerance on all COVID-19 prevention measures. • Do not visit other residential premises except for essential reasons. |



| | |
|---|--|
| <ul style="list-style-type: none"> Physical distancing must be maintained. <p>Virtual and drive-in gatherings and events permitted.</p> <p>Capacity limits for wedding services, funeral services, and other religious services, rites or ceremonies:</p> <ul style="list-style-type: none"> 10 people indoors 10 people outdoors <p>Virtual and drive-in wedding services, funeral services, religious services, rites or ceremonies are encouraged.</p> | <ul style="list-style-type: none"> Cancel, postpone, or hold virtually any other discretionary in-person activities, or participate only with your household and essential supports. <p>Workplace Instructions</p> <ul style="list-style-type: none"> Enable, as possible, work from home options for employees. Prohibit non-essential visitors (persons whose presence is not essential to the functioning of the workplace as a workplace) from attending their facilities. |
| Restaurant, Bars and Food or Drink Establishments | |
| COVID-19 Response Framework: Grey – Lockdown Level | WECHU – Specific Enhanced Measures |
| <ul style="list-style-type: none"> Indoor and outdoor dining service is closed. Take out, drive through, and food delivery permitted, including alcohol. | <ul style="list-style-type: none"> No additional measures. |
| Sports and Recreational Fitness | |
| COVID-19 Response Framework: Grey – Lockdown Level | WECHU – Specific Enhanced Measures |
| <ul style="list-style-type: none"> Facilities for indoor or outdoor sports and recreational fitness activities are closed except for: <ul style="list-style-type: none"> The sole use of high performance athletes including parasport athletes, and specified professional leagues (e.g., NHL, CFL, MLS, NBA) Specified purposes (e.g., day camps, child care) Community centres and multi-purpose facilities are permitted to be open for certain activities (e.g., child care services, day camps, social services such as mental health or addictions support) Outdoor recreational amenities (e.g., ice rinks, ski hills, snow trails) are open with restrictions (e.g., no team sports) <p>For additional clarity, the following outdoor recreational amenities may remain open in Grey-Lockdown:</p> <ol style="list-style-type: none"> Parks and recreational areas. Baseball diamonds. Batting cages. Soccer, football and sports fields. Tennis, platform tennis, table tennis and pickleball courts. Basketball courts. BMX parks. | <p>Recreational Centres:</p> <ul style="list-style-type: none"> Strictly follow the number of people allowed in the establishment under the regulations. Maintain lists with names and contact information of anyone entering the facility to assist with contact tracing in the event of an exposure. |



| | |
|--|---|
| <ol style="list-style-type: none"> 8. Skate parks. 9. Golf courses and driving ranges. 10. Frisbee golf locations. 11. Cycling tracks and bike trails. 12. Horse riding facilities. 13. Shooting ranges, including those operated by rod and gun clubs. 14. Outdoor ice rinks. 15. Ski hills. 16. Snow trails, including snowmobile, cross country ski and snow shoe trails. 17. Playgrounds. 18. Portions of parks or recreational areas containing outdoor fitness equipment. <p>These above listed outdoor amenities MUST comply with the following:</p> <ul style="list-style-type: none"> • 2m physical distancing is maintained between individuals at all times within the amenity • Team sports are NOT played or practiced • Locker rooms, change rooms, showers and clubhouses remain closed, except to the extent they provide access to a washroom or a portion of the amenity that is used to provide first aid | |
| Meeting and Event Spaces | |
| COVID-19 Response Framework: Grey – Lockdown Level | WECHU – Specific Enhanced Measures |
| <p>All meeting and event spaces are closed with limited exceptions for:</p> <ul style="list-style-type: none"> • Child care and day camps for children • Court services • Government services • Mental health and addiction support services (e.g., Alcoholics Anonymous) are permitted to a maximum of 10 people • Provision of social services • Contact information must be collected for every member of the public who attends a meeting or event. These records must be maintained for at least one month and provided to the Health Unit upon request (court services exempted) | <ul style="list-style-type: none"> • No additional measures. |
| Retail | |
| COVID-19 Response Framework: Grey – Lockdown Level | WECHU – Specific Enhanced Measures |



Retail is generally permitted to be open for curbside pick-up or delivery only (in-person retail shopping not permitted) with some exceptions:

- Supermarkets, grocery stores, convenience stores, hardware stores, other retailers selling groceries, beer and wine and liquor stores, pharmacies and safety supply stores permitted to be open for in-person shopping
- 50% capacity limits where in-person shopping is permitted
- Motor/recreational vehicle sales permitted to be open for in-person shopping by appointment only and other restrictions
- Garden centres, plant nurseries: indoor by appointment. Permitted if public remains outdoors or by curbside pick-up or delivery
- Outdoor markets, including farmer's markets and holiday markets, permitted [with restrictions](#)

Safety Plan

The person responsible for a business that is open must prepare and make available a [safety plan](#). The plan must:

- Describe measures/procedures that have been or will be implemented in the business, place, facility or establishment to reduce spread of COVID-19.
- Include measures for screening, physical distancing, masks, cleaning, disinfecting and personal protective equipment (PPE).
- Be in writing and made available to any person for review, on request.
- Be posted in a visible place to come to the attention of those working or attending the location

Retail outlets in malls permitted to be open for pick-up or delivery (in-person retail shopping not permitted)

- Access to shopping malls for limited purposes, including access to businesses and organizations permitted to be open (e.g., pharmacy, dentist); food court open for take-out; malls may also establish designated pick-up points inside or adjacent to the mall

Mall Instructions:

- Prohibit consumption of food or drink while walking through malls.



| | |
|--|---|
| <ul style="list-style-type: none"> Businesses that remain open must ensure that a 2 metre physical distance is maintained while customers are waiting in line inside and outside | |
| Personal Care Services | |
| COVID-19 Response Framework: Grey – Lockdown Level | WECHU – Specific Enhanced Measures |
| <ul style="list-style-type: none"> Under the provincial order, all personal service settings must close | <ul style="list-style-type: none"> No additional measures. |
| Casino, Bingo Halls and Gaming Establishments | |
| COVID-19 Response Framework: Grey – Lockdown Level | WECHU – Specific Enhanced Measures |
| <ul style="list-style-type: none"> Under the provincial order, all casinos, bingo halls, and gaming establishments must close | <ul style="list-style-type: none"> No additional measures. |
| Cinemas | |
| COVID-19 Response Framework: Grey – Lockdown Level | WECHU – Specific Enhanced Measures |
| <p>Closed, except for:</p> <ul style="list-style-type: none"> Drive-in cinemas Rehearsal or performing a recorded or broadcasted event <ul style="list-style-type: none"> Note: Singers and players of brass or wind instruments must be separated from any other performers by plexiglass or other impermeable barrier. A safety plan is required to be prepared and available upon request | <ul style="list-style-type: none"> No additional measures |
| Performing Arts Facilities | |
| COVID-19 Response Framework: Grey – Lockdown Level | WECHU – Specific Enhanced Measures |
| <ul style="list-style-type: none"> Closed to spectators, except for drive-in performances Rehearsal or performing a recorded or broadcasted event remains permitted <ul style="list-style-type: none"> Performers and employees must maintain 2 metre physical distance except for purposes of the performance Singers and players of brass or wind instruments must be separated from any other performers by Plexiglas or other impermeable barrier. A safety plan is required to be prepared and available upon request | <ul style="list-style-type: none"> No additional measures |



For a list of other businesses, organizations, and services permitted to operate in Lockdown, please refer to [Ontario Regulation 82/20: Rules for Areas in Stage 1](#) for full details, or review a summary in Appendix A of the [COVID-19 Response Framework: Keeping Ontario Safe and Open – Lockdown Measures](#).

Guidance Documents

A list of all guidance documents from the Province of Ontario, and the Windsor-Essex County Health Unit (WECHU) can be found on the [Guidelines](#) page of the WECHU website.

- Ministry of Health updated [Retirement Home COVID-19 Visiting Policy](#)