



# PUBLIC HEALTH MEMO

## COVID-19

This is a stakeholder update for the week of November 30<sup>th</sup>.

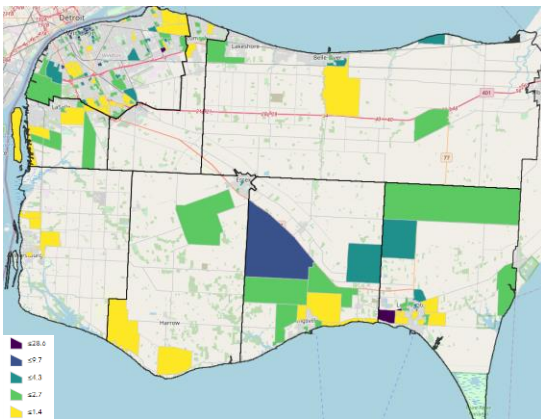
### Current Statistics

For all up-to-date data and information, please visit the [Local Updates](#) page on our website, which includes the local COVID-19 Dashboard. Daily local public health live updates and weekly summary reports can also be found on the [WECHU YouTube Channel](#).

#### Case Counts in Windsor and Essex County

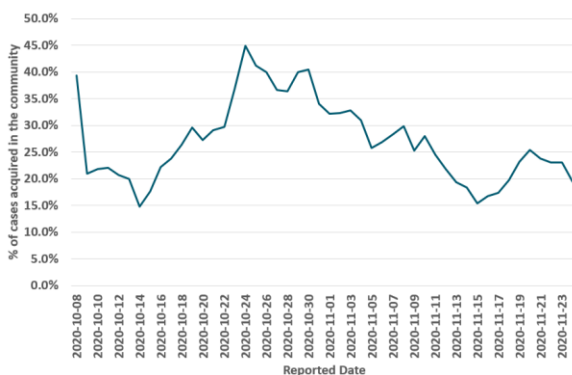
Confirmed Cases		Deaths		Resolved Cases	
3,637 (↑41)		79		3134	
Current LTC & RH Outbreaks		Current Workplace Outbreaks		Current Community Outbreaks	
3		7		2	
				Current School Outbreaks	
				2	

#### Confirmed Active COVID-19 Cases in Windsor and Essex County



The map reflects the number of active positive COVID-19 cases per 1000 residents. Please note that this does not reflect where the cases were infected, but rather where they reside. Cases may have been exposed to COVID-19 outside of their home or in other settings.

#### Percent of new COVID-19 cases acquired in the community, 7-day average





## Federal, Provincial and Local Guidelines and Recommendations (Updates)

### Federal

- The Mandatory Isolation Order and temporary travel restrictions for all travelers seeking entry into Canada from a country other than the US has been extended until January 21<sup>st</sup>, 2021. Travel restrictions for US citizens and foreign nationals arriving from the US remain in place until December 21, 2020 and may be extended at that time.

### Provincial

- The province has provided some preliminary [guidance on how to safely celebrate the holiday season](#). The Province is launching a new holiday webpage providing guidance on how individuals and families can plan for a safe holiday season; the Windsor-Essex County Health Unit will be providing further guidance tailored to the Windsor-Essex region in early December.

### Windsor-Essex

- The Windsor-Essex County Health Unit (WECHU) has issued public exposure notifications for the following locations: Carmen's Catering, Shoppers Drug Mart at 7980 Menard St, Windsor, India 47 Restaurant and Bar, Loose Goose Restopub and Lounge – Lakeshore Oasis, Applebee's Huron Church Restaurant, Tabouli by Eddy's Restaurant, RIA Financial, and Food Basics in Tecumseh. The WECHU has received a report that individuals positive for COVID-19 attended these locations while infectious. Although the potential exposures listed on the WECHU's [Public Exposure Notification page](#) are considered low risk, individuals who visited any of the locations on the identified dates are asked to monitor themselves for symptoms of COVID-19 for 14 days from the date of exposure.
- As of November 30<sup>th</sup>, there are 3 long-term care and retirement home outbreaks, 7 workplace outbreaks, 2 community outbreaks, and 2 school outbreaks in the Windsor-Essex region. This includes the cluster of cases at Windsor Regional Hospital and Hôtel Dieu Grace Healthcare that the Windsor-Essex County Health Unit is working to investigate. For more information on outbreaks, please visit the [WECHU website](#).

Details about cases at specific schools can be found on the websites of the corresponding school boards; please see the following for the direct links to the outbreak tracking pages by local school board: [Windsor-Essex County District School Board](#), [Greater Essex county District School Board](#), [Conseil Scolaire Viamonde](#), [Conseil Scolaire Catholique Providence](#).

- Due to the increase in local active COVID-19 cases, effective 12:01 am on Monday, November 30<sup>th</sup>, Windsor and Essex County moved into the **Red– Control Level** of the Province of Ontario's [COVID-19 Response Framework](#) :



### Control (stringent measures) - red

#### Public Health Measures

Broader-scale measures and restrictions across multiple sectors to control transmission (return to modified Stage 2). Restrictions are the most severe available before widescale business or organizational closure.

In addition to the measures under provincial regulations, the Windsor-Essex County Health Unit's Medical Officer of Health, Dr. Wajid Ahmed, has issued [additional restrictions for the region](#) to control the spread of COVID-19.



Taking into account new provincial measures and the WECHU's instructions, a summary of key enhanced measures for Windsor and Essex County include:

General Public Health Measure	
COVID-19 Response Framework: Red - Control Level	WECHU – Specific Enhanced Measures
<p>Gathering limits for functions, parties, dinners, gatherings, barbeques or wedding receptions held in private residences, backyards, or parks:</p> <ul style="list-style-type: none"> <li>• 5 people indoors</li> <li>• 25 people outdoors</li> <li>• Must comply with physical distancing</li> </ul> <p>Gathering limit for organized public events and gatherings in staffed businesses and facilities:</p> <ul style="list-style-type: none"> <li>• 5 people indoors</li> <li>• 25 people outdoors</li> <li>• Must comply with physical distancing</li> </ul> <p>Gathering limit for religious services, or ceremonies, including wedding services and funeral services:</p> <ul style="list-style-type: none"> <li>• 30% capacity of the room indoors</li> <li>• 100 people outdoors</li> <li>• Must comply with physical distancing</li> </ul> <p>Gathering limit for religious services, weddings, and funerals:</p> <ul style="list-style-type: none"> <li>• 30% capacity indoors</li> <li>• 100 people outdoors</li> </ul> <p>Requirement for workplace screening. See the <a href="#">COVID-19 Screening Tool for Workplaces</a> for more information</p> <p>Requirement for face coverings at indoor workplaces</p> <p>Requirement for face coverings in indoor public spaces, with limited exemptions</p> <p>Personal protective equipment that provides protection of the eyes, nose, and mouth, is required if a worker is required to come within 2 metres of another person who is not wearing a face covering</p> <p>Requirement to maintain physical distancing</p>	<p><b>General Instructions for residents:</b></p> <ul style="list-style-type: none"> <li>• Zero tolerance on all COVID-19 prevention measures</li> <li>• Minimize your close contacts to your household members only</li> <li>• Minimize visiting to a private home or residential premise, including social gatherings (both indoor and outdoor) except for essential reasons</li> <li>• Cancel, postpone, or hold virtually any other discretionary in-person activities, or participate only with your household and essential supports</li> </ul> <p><b>Workplace Instructions</b></p> <ul style="list-style-type: none"> <li>• Enable, as possible, work from home options for employees</li> <li>• Prohibit non-essential visitors (persons whose presence is not essential to the functioning of the workplace as a workplace) from attending their facilities</li> </ul>



Restaurants, Bars, and Food or Drink Establishments	
COVID-19 Response Framework: Red - Control Level	WECHU – Specific Enhanced Measures
<ul style="list-style-type: none"> <li>Maximum number of patrons permitted to be seated indoors is 10</li> <li>Outdoor dining, take out, drive through, and delivery permitted, including alcohol</li> <li>Require patrons to be seated; 2m minimum between tables</li> <li>Dancing, singing and performing music is prohibited.</li> <li>No buffet style service</li> <li>Night clubs and strip clubs only permitted to operate as restaurant or bar</li> <li>Line-ups/patrons congregating outside venues managed by venue; 2m distance and face covering required</li> <li>Face coverings except when eating or drinking only</li> <li>Eye protection where patrons without face coverings are within 2m of workers</li> <li>Limit operating hours, establishments must close from 10 p.m. to 5 a.m.</li> <li>Liquor sold or served only between 9 a.m. to 9 p.m.</li> <li>No consumption of liquor permitted between 10 p.m. to 9 a.m.</li> <li>Limit of 4 people may be seated together</li> <li>Limit volume of music (e.g., to be no louder than the volume of a normal conversation)</li> <li>Require screening of all patrons (e.g. questionnaire)</li> <li><a href="#">Safety plan</a> available upon request</li> </ul>	<ul style="list-style-type: none"> <li>N/A</li> </ul>
Sports and Recreation Fitness	
COVID-19 Response Framework: Red - Control Level	WECHU – Specific Enhanced Measures
<ul style="list-style-type: none"> <li>Gyms and fitness studios permitted to be open with maximum of:             <ul style="list-style-type: none"> <li>10 people indoors or 25 people outdoors in classes; and</li> <li>10 people indoors in areas with weights or exercise equipment</li> </ul> </li> <li>No spectators permitted (exemption for parent and guardian supervision of children)</li> <li>Increase spacing between patrons to 3 metres for areas of a sport or recreational facility where there are weights or exercise equipment and in exercise and fitness classes</li> <li>Team sports must not be practiced or played except for training (no games or scrimmage)</li> <li>Activities that are likely to result in individuals coming within 2 metres of each other are not</li> </ul>	<p>Gyms and Fitness Centers instructions:</p> <ul style="list-style-type: none"> <li>Strictly follow the number of people allowed in the establishment under the regulations</li> <li>Direct participants to pre-register for a specific group class that might be offered (i.e., no walk-in participants permitted), in addition to the provincially mandated registration to enter the facility</li> <li>Maintain class lists with names and contact information of participants to assist with cohorting and contact tracing in the event of an exposure</li> <li>Retain class contact lists for a period of at least one month; and only disclose the records to a MOH or an inspector under the HPPA on request</li> </ul>



<p>permitted; no contact permitted for team or individual sports, with an exemption for high performance, including parasport, athletes.</p> <ul style="list-style-type: none"> <li>• Patrons may only be in the facility for 90 minutes except if engaging in a sport</li> <li>• Limit volume of music to be low enough that a normal conversation is possible; measures to prevent shouting by both instructors and members of the public</li> <li>• Face coverings required except when exercising</li> <li>• Require contact information for all members of the public that enter the facility</li> <li>• Require reservation for entry; one reservation for teams</li> <li>• Screening of patrons is required, in accordance with instructions issued by the Office of the Chief Medical Officer of Health</li> <li>• A <a href="#">safety plan</a> is required to be prepared and made available upon request</li> </ul>	<p>for a purpose specified in Section 2 of that Act or as otherwise required by law</p>
<b>Meeting and Event Spaces</b>	
<b>COVID-19 Response Framework: Red - Control Level</b>	<b>WECHU – Specific Enhanced Measures</b>
<ul style="list-style-type: none"> <li>• Maximum of 10 people per facility indoors or 25 people outdoors</li> <li>• 100 people outdoors permitted only for court/government services, weddings or funeral services</li> <li>• Booking multiple rooms for the same event not permitted</li> <li>• Limit operating hours, establishments must be closed between at 10 p.m. and 5 a.m.</li> <li>• Liquor sold or served only between 9 a.m. to 9 p.m.</li> <li>• No consumption of liquor permitted between 10 p.m. to 9 a.m.</li> <li>• Require contact information for all seated patrons</li> <li>• Limit of 4 people may be seated together</li> <li>• Require screening of patrons (e.g. questionnaire)</li> <li>• Limit volume of music (e.g., to be no louder than the volume of a normal conversation)</li> <li>• <a href="#">Safety plan</a> available upon request</li> </ul>	<ul style="list-style-type: none"> <li>• N/A</li> </ul>



Retail	
COVID-19 Response Framework: Red - Control Level	WECHU – Specific Enhanced Measures
<ul style="list-style-type: none"> <li>Fitting rooms must be limited to non-adjacent stalls</li> <li>Requirement to maintain 2m distance while standing in line (inside and outside) and flow management</li> <li>Line-ups/patrons congregating outside venues must be managed by venue; 2m distance and face covering required</li> <li>Consider limiting capacity in retail stores and in shopping malls in winter</li> <li>Limit volume of music (e.g., to be no louder than the volume of a normal conversation)</li> <li>For malls: <ul style="list-style-type: none"> <li>interior dining spaces such as tables and seating in food courts, are closed.</li> <li>Require screening of patrons at mall entrances (e.g. questionnaire)</li> <li>For malls a <a href="#">safety plan</a> must be available upon request</li> </ul> </li> </ul>	<p><b>Mall Instructions:</b></p> <ul style="list-style-type: none"> <li>Prohibit consumption of food or drink while walking through malls</li> </ul> <p><b>Retail and Grocery Store Instructions:</b></p> <ul style="list-style-type: none"> <li>Designate specific store hours to serve seniors who do not have any other support systems for essential grocery needs</li> <li>Restrict the number of people in the store to allow for physical distancing</li> </ul> <p>Ensure signage for flow of customers and staff to minimize any close physical contact</p>
Personal Care Services	
COVID-19 Response Framework: Red - Control Level	WECHU – Specific Enhanced Measures
<ul style="list-style-type: none"> <li>Oxygen bars, steam rooms, saunas, whirlpools, bath houses, other adult venues, hot tubs, floating pools and sensory deprivation pods closed (some exceptions)</li> <li>Services requiring removal of face coverings prohibited</li> <li>Change rooms, locker rooms, and showers closed</li> <li>Require screening of patrons (e.g., questionnaire)</li> <li>Require contact information from all patrons</li> <li><a href="#">Safety plan</a> available upon request</li> </ul>	<ul style="list-style-type: none"> <li>Locker rooms, change rooms, and showers must be closed, except a washroom or a portion of business that is used to provide first aid</li> </ul>
Casinos, Bingo Halls, and Gaming Establishments	
COVID-19 Response Framework: Red - Control Level	WECHU – Specific Enhanced Measures
<ul style="list-style-type: none"> <li>Capacity cannot exceed 10 people indoors or 25 people outdoors</li> <li>Table games are prohibited</li> <li>Liquor sold or served only between 9 a.m. to 9 p.m.</li> <li>No consumption of liquor permitted between 10 p.m. to 9 a.m.</li> <li>Require contact information from all patrons</li> <li>Require screening of all patrons (e.g. questionnaire)</li> </ul>	<ul style="list-style-type: none"> <li>N/A</li> </ul>



<ul style="list-style-type: none"> <li>• <a href="#">Safety plan</a> available upon request</li> </ul>	
<b>Cinemas</b>	
<b>COVID-19 Response Framework: Red - Control Level</b>	<b>WECHU – Specific Enhanced Measures</b>
<p>Please note in Red-Control level, all indoor cinemas are CLOSED.</p> <ul style="list-style-type: none"> <li>• Drive-in cinemas are permitted to remain open</li> <li>• Rehearsal or performing a recorded or broadcasted event remains permitted</li> <li>• Singers and players of brass or wind instruments must be separated from any other performers by plexiglass or other impermeable barrier.</li> </ul>	<ul style="list-style-type: none"> <li>• N/A</li> </ul>
<b>Performing Arts Facilities</b>	
<b>COVID-19 Response Framework: Red - Control Level</b>	<b>WECHU – Specific Enhanced Measures</b>
<ul style="list-style-type: none"> <li>• Please note in RED- Control level, all performing arts facilities are CLOSED to spectators.</li> <li>• Rehearsal or performing a recorded or broadcasted event remains permitted</li> <li>• Singers and players of brass or wind instruments must be separated from any other performers by Plexiglas or other impermeable barrier</li> </ul>	<ul style="list-style-type: none"> <li>• N/A</li> </ul>

### *Guidance Documents*

A list of all guidance documents from the Province of Ontario, and the Windsor-Essex County Health Unit (WECHU) can be found on the [Guidelines](#) page of the WECHU website.

- WECHU developed COVID-19 [Safety Plan Template \(PDF\)](#) and [fillable Word document](#).
- COVID-19 screening tool can be accessed [online](#) or for [print](#).
- WECHU's [Safety Guide for Holiday Donations in Windsor-Essex](#)