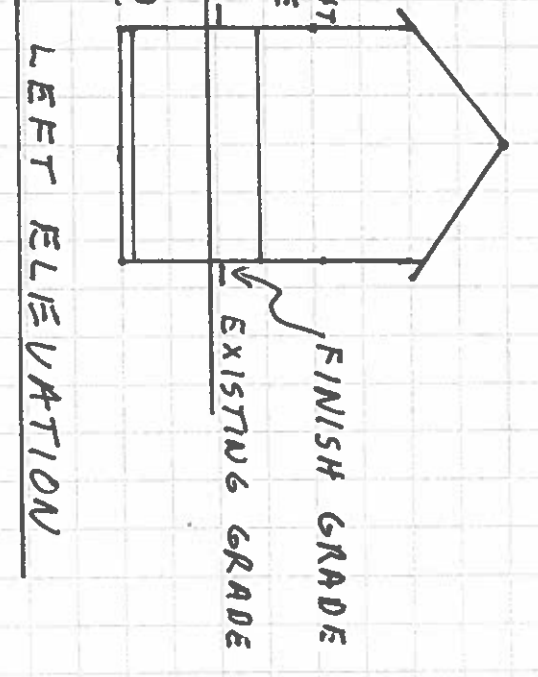
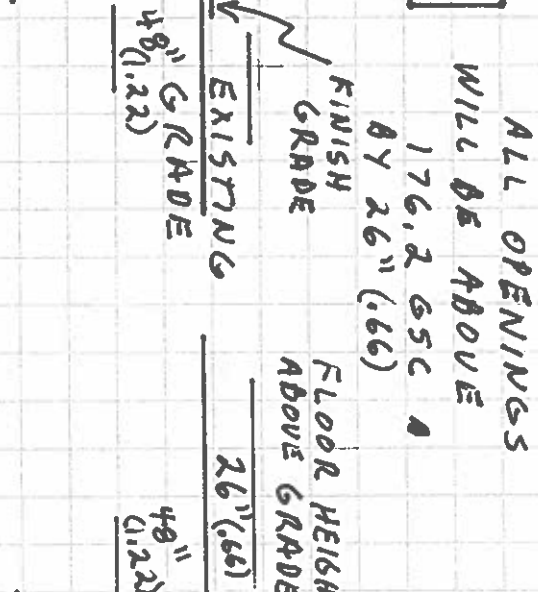
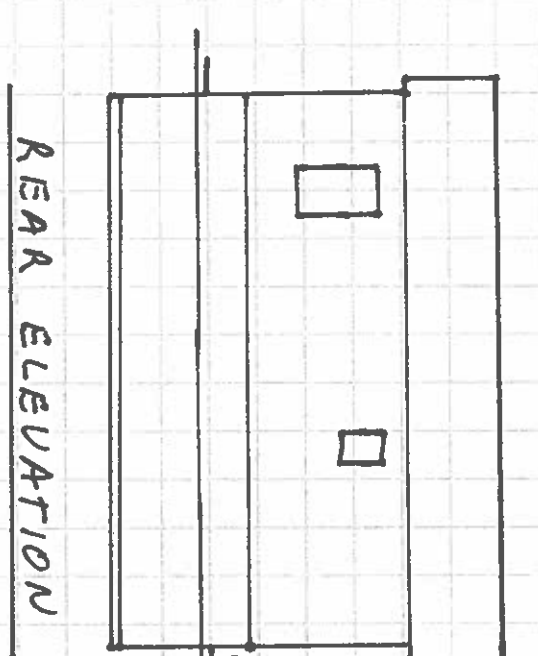
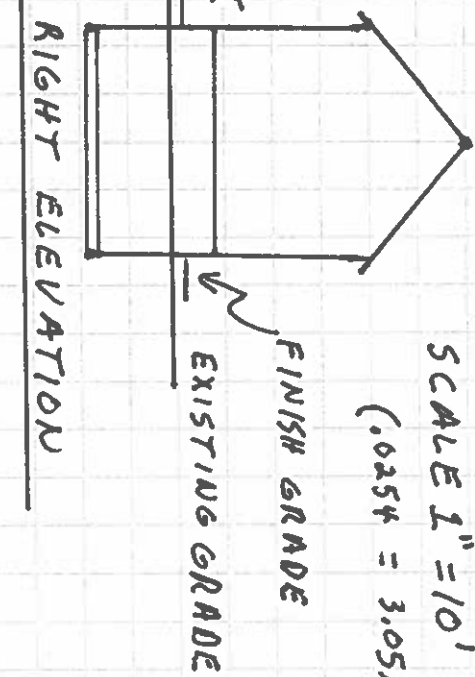
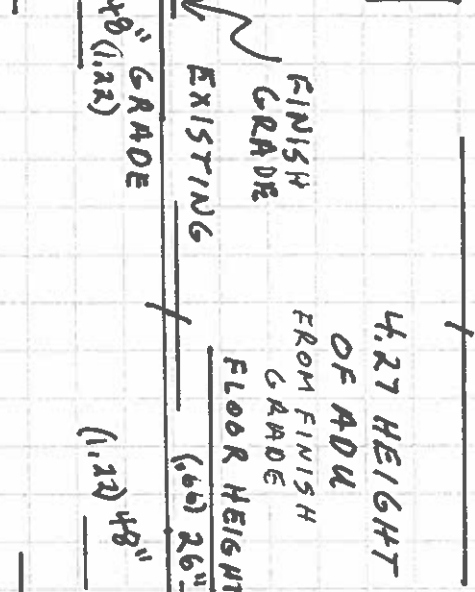
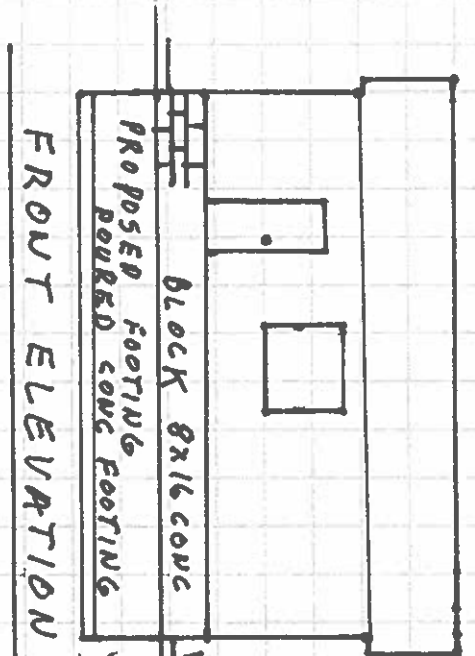


DENNIS TUFFIN LOTS 29+28 110 SOUTH ANA COLCH. S. ESSEX

SCALE 1" = 10'
(.0254 = 3.05)



ALL OPENINGS WILL BE ABOVE 176.2 G5C BY 26" (1.66)

FINISH GRADE WILL BE AT 176.2 G5C