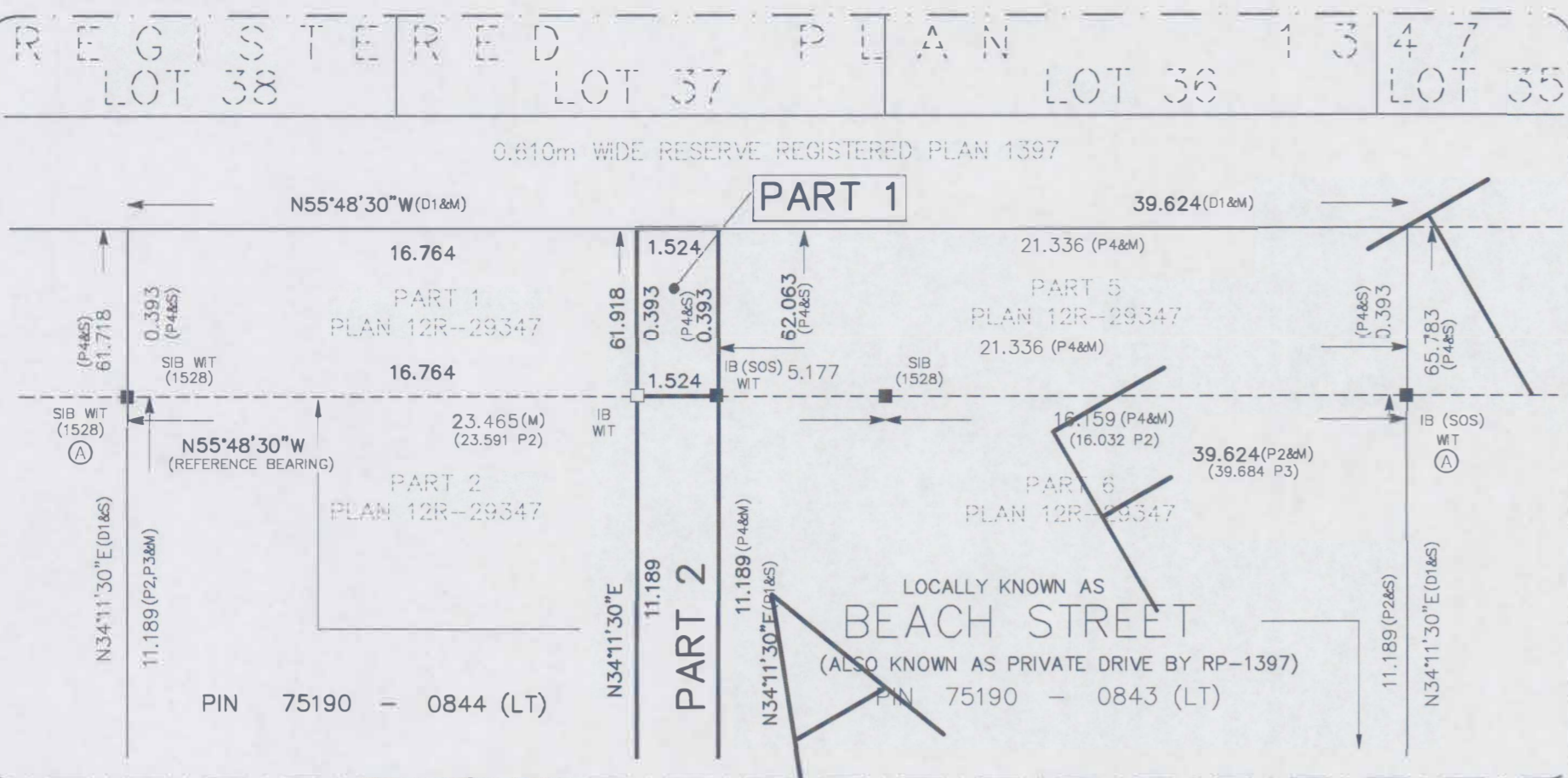


DETAIL 'A'

NOT TO SCALE



SCHEDULE			
PART	LOT/BLOCK	PLAN	PIN
1	PART OF PRIVATE DRIVE	REGISTERED PLAN 1397	PART OF PIN 75190-0844 (LT)
2	PART OF LOT 26		
3	PART OF LOT 26		
			AREA (m ²)
			0.60
			17.05
			76.77

GEOGRAPHIC TOWNSHIP OF COLCHESTER SOUTH
 PART 2: SUBJECT TO EASEMENT AS IN R1098066, R1110419 & R1149004
 SUBJECT TO RIGHT OF WAY AS IN R1251619

PLAN OF SURVEY OF
 PART OF LOT 26
 AND
 PART OF PRIVATE DRIVE
 REGISTERED PLAN 1397
 GEOGRAPHIC TOWNSHIP OF COLCHESTER SOUTH
 TOWN OF ESSEX
 COUNTY OF ESSEX

SCALE 1 : 250 METRES
 0 1 2 3 4 5 10 20 30
 SURVEYORS ON SITE INC.

THE INTENDED PLOT SIZE OF THIS PLAN IS 609mm IN WIDTH BY 609mm IN HEIGHT WHEN PLOTTED AT A SCALE OF 1:250.



LEGEND

□	MONUMENT PLANTED
■	MONUMENT FOUND
SIB	STANDARD IRON BAR
SSIB	SHORT STANDARD IRON BAR
IB	IRON BAR
IP	IRON PIPE
CC	CUT CROSS
M	MEASURED
S	SET
P1	REGISTERED PLAN 1397
P2	PLAN 12R-9585
P3	PLAN 12R-11349
P4	PLAN 12R-29347
D1	INSTRUMENT R1251619
1201	CLARKE SURVEYORS INC.
1341	RICHARD W. MURRAY, O.L.S.
1528	VERHAEGEN, STUBBERFIELD, HARTLEY, BREWER, BEZAIRE INC.
SOS	SURVEYORS ON SITE INC.
OU	ORIGIN UNKNOWN

NOTES

DISTANCES AND COORDINATES SHOWN ON THIS PLAN ARE IN METRES AND CAN BE CONVERTED TO FEET BY DIVIDING BY 0.3048.

DISTANCES ON THIS PLAN ARE HORIZONTAL GROUND DISTANCES AND CAN BE CONVERTED TO GRID DISTANCES BY MULTIPLYING BY THE AVERAGE COMBINED SCALE FACTOR OF 0.999912322.

BEARINGS ARE UTM GRID DERIVED FROM NETWORK RTK GPS OBSERVATIONS (SMARTNET) ON MONUMENTS (A) AND (B) AS SHOWN HEREON, HAVING A GRID BEARING OF N55°48'30"W, NAD83 CSRS (2010.0) AND ARE REFERRED TO THE CENTRAL MERIDIAN OF UTM ZONE 17 (81° W LONGITUDE).

FOR BEARING COMPARISONS, THE FOLLOWING ROTATIONS WERE APPLIED:
 P1 - 5'13'30" CLOCKWISE
 P2, P3 - 1'18'10" CLOCKWISE

SURVEYOR'S CERTIFICATE

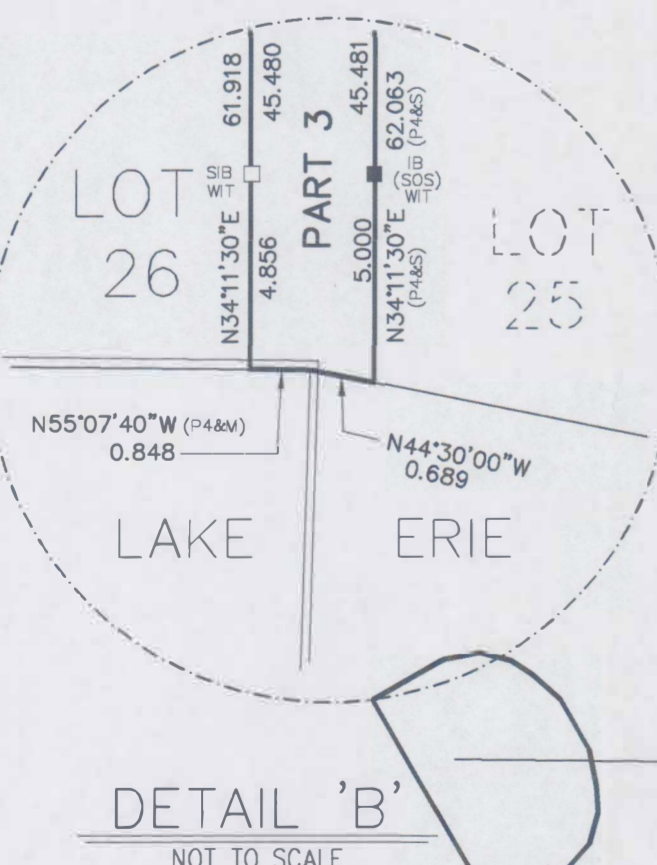
I CERTIFY THAT:

- THIS SURVEY AND PLAN ARE CORRECT AND IN ACCORDANCE WITH THE SURVEYS ACT, THE SURVEYORS ACT, THE LAND TITLES ACT AND THE REGULATIONS MADE UNDER THEM.
- THE SURVEY WAS COMPLETED ON THE 10th DAY OF OCTOBER, 2024.

OCTOBER 17, 2024

ROBERT WANNACK
 ONTARIO LAND SURVEYOR

THIS PLAN OF SURVEY RELATES TO AOLS PLAN SUBMISSION FORM NUMBER V-XXXXX.



COORDINATES BELOW ARE DERIVED FROM NETWORK RTK GPS OBSERVATIONS (SMARTNET) AND ARE REFERRED TO UTM ZONE 17, NAD83 (CSRS) (2010.0).

COORDINATES COMPLY WITH THE URBAN ABSOLUTE ACCURACY PER SEC. 14(2) OF O.REG. 216/10.

POINT ID	NORTHING	EASTING
(A)	4652976.687	335541.380
(B)	4652998.950	335508.608

COORDINATES CANNOT, IN THEMSELVES, BE USED TO RE-ESTABLISH CORNERS OR BOUNDARIES SHOWN ON THIS PLAN.

3560 WALKER ROAD
 WINDSOR, ONTARIO
 N8W 3S4
 519-818-0767
 www.surveyorsonsite.com

DRAWN BY: SJP CHECKED BY: RW DATE: OCTOBER 17, 2024 FILE: 2024-475 RPLAN