



Heritage Designation Recommendations

Development Services Department

August 12, 2024



Colchester

400 County Rd. 13, Klie Farm



- Built in 1889 by Henry & Albert Klie
- A red brick Victorian-era farmhouse that has characteristics that were common in late-Georgian architecture
- Located on the historic Klie family farm, that was purchased in December 1880

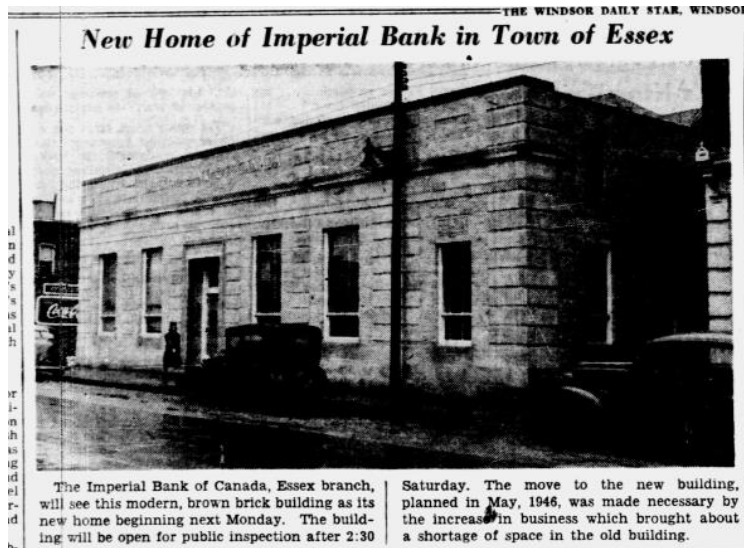


Recommendation for Designation

- Design/Physical Value
 - The property has design value or physical value because it is a rare, unique, representative, or early example of a style, type, expression, material, or construction method
 - The property has design value or physical value because it displays a high degree of craftsmanship or artistic merit.
- Historical/Associative Value
 - The property has historical value or associative value because it has direct associations with a theme, event, belief, person, activity, organization or institution that is significant to a community.
- Contextual Value
 - The property has contextual value because it is a landmark

Essex Centre

18 Talbot St. N, Imperial Bank of Canada



- Built in 1947, to replace the original location at the corner of Centre and Talbot
- Built in an Art Deco architectural style and was described as the most modern bank in Essex County
- The Imperial Bank of Canada first opened in Essex on March 1st, 1885. It was the 1st branch to open south of London and became the 11th branch to open in Canada
- Closed in the 1970's/1980's



Recommendation for Designation

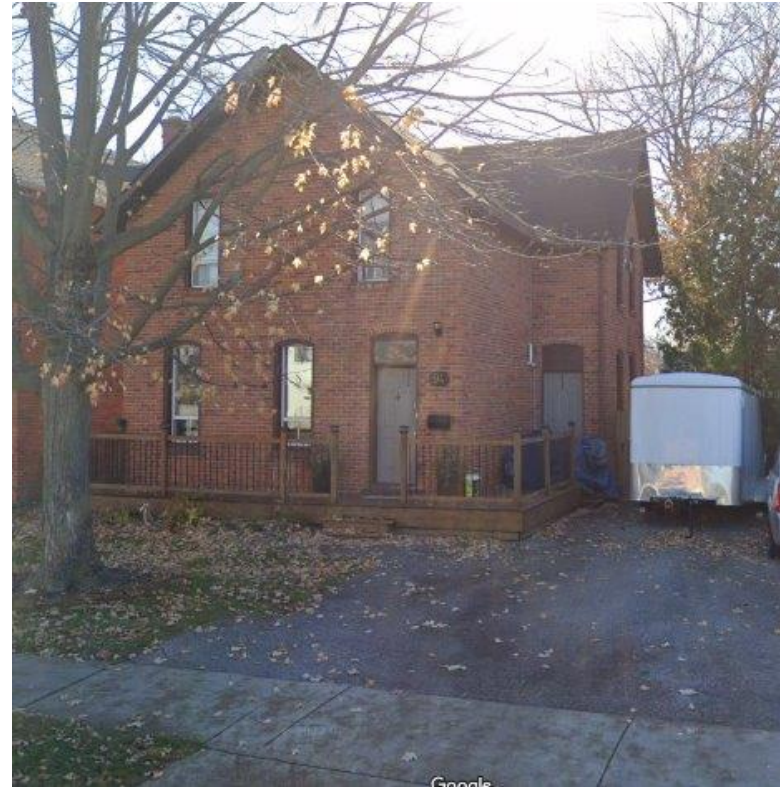
- Design/Physical Value
 - The property has historical value or associative value because it has direct associations with a theme, event, belief, person, activity, organization or institution that is significant to a community.
- Historical/Associative Value
 - The property has historical value or associative value because it has direct associations with a theme, event, belief, person, activity, organization or institution that is significant to a community.
- Contextual Value
 - The property has contextual value because it is physically, functionally, visually or historically linked to its surroundings.

94, 98, & 102 Talbot St. S



94 Talbot St. S, Arthur Raines House

- Built between July 1886 and April 1887 in a hybrid Victorian style
- It was a part of a small development on Talbot Street South, building homes for the upper-classes
- It was the home of Arthur Raines, a local grocer and former Mayor of Essex
- He served on Council as the Ward 2 Councillor from 1895-1898 and in 1900, as Mayor in 1901, 1902, and 1906, and as Reeve in 1922



Recommendation for Designation

- Design/Physical Value
 - The property has design value or physical value because it is a rare, unique, representative, or early example of a style, type, expression, material, or construction method
- Historical/Associative Value
 - The property has historical value or associative value because it has direct associations with a theme, event, belief, person, activity, organization or institution that is significant to a community.
- Contextual Value
 - The property has contextual value because it is important in defining, maintaining, or supporting the character of an area

98 Talbot St. S, Essex United Church Manse



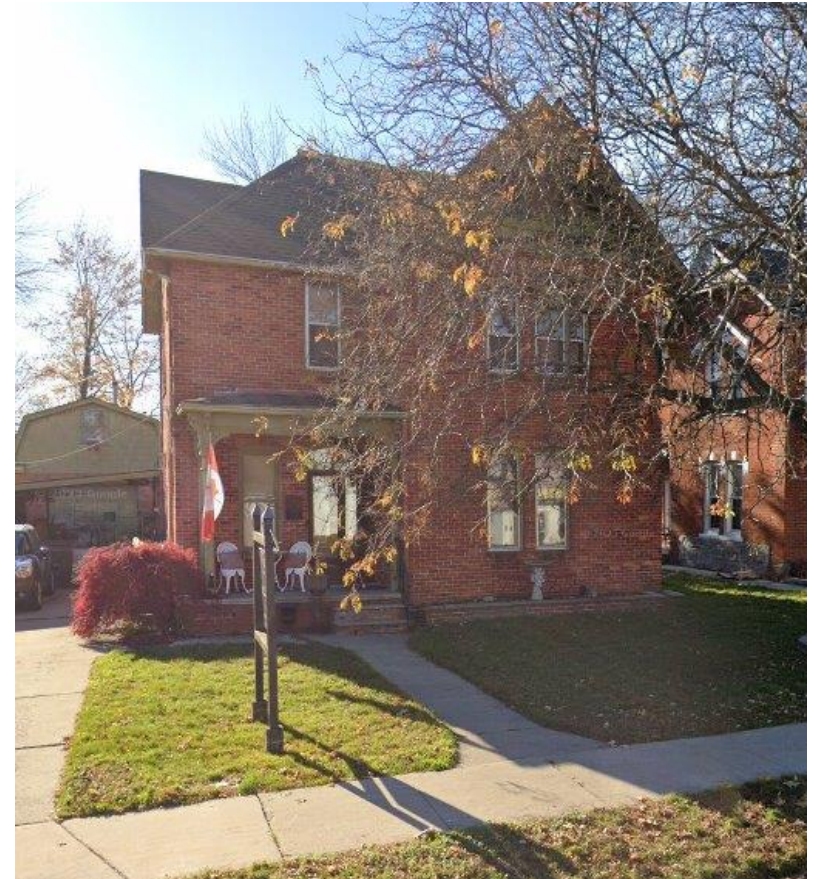
- Built between 1886 and 1892 in a Folk Victorian style
- It was conveyed to the Grace Methodist Church (now Essex United Church) Congregation and served as the manse
- It was the home of several ministers from 1892 until 1943, when it was sold to Sylvester Damn

Recommendation for Designation

- Design/Physical Value
 - The property has design value or physical value because it is a rare, unique, representative, or early example of a style, type, expression, material, or construction method
- Historical/Associative Value
 - The property has historical value or associative value because it has direct associations with a theme, event, belief, person, activity, organization or institution that is significant to a community.
- Contextual Value
 - The property has contextual value because it is important in defining, maintaining, or supporting the character of an area

102 Talbot St. South

- Built before the town of officially incorporated in 1890 in hybrid Folk-Victorian architectural style
- Built using materials from local brickyards
- The development of Talbot Street South saw the construction of larger, more expensive dwellings



Recommendation for Designation

- Design/Physical Value
 - The property has design value or physical value because it is a rare, unique, representative or early example of a style, type, expression, material or construction method.
- Contextual Value
 - The property has contextual value because it is physically, functionally, visually or historically linked to its surroundings.

Harrow

Gilgal Cemetery



- Located on County Road 11 between the 5th and 6th concessions
- The only remaining part of the Village of Gilgal
- The Village of Gilgal was a predominantly Black community, established by freedom seekers in the early 1840s
- The community was centered around the B.M.E Church and the schoolhouse
- Approximately 103 burials

Recommendation for Designation

- **Historical/Associative Value**
 - The property has historical value or associative value because it has direct associations with a theme, event, belief, person, activity, organization or institution that is significant to a community.
 - The property has historical value or associative value because it yields, or has the potential to yield, information that contributes to an understanding of a community or culture.
- **Contextual Value**
 - The property has contextual value because it is physically, functionally, visually or historically linked to its surroundings

Ferriss Cemetery

- Located on Ferriss Road between the 3rd Concession and County Road 20 E
- On the land settled by Joseph Ferriss and Catherine Hahn in the mid 1790s
- Contains at least 15 burials and 10 gravestones that date back to the early 1820's
- The final resting place of John Ferriss, the 1st Reeve of Colchester Township



Recommendation for Designation

- Historical/Associative Value
 - The property has historical value or associative value because it has direct associations with a theme, event, belief, person, activity, organization or institution that is significant to a community.
- Contextual Value
 - The property has contextual value because it is physically, functionally, visually or historically linked to its surroundings.

21 King St. E, Robert Heaton Building



- Built in 1901 by Robert Heaton as an expansion to his farm implement business, Robert Heaton's Hardware & Farm Implements
- Built in a Victorian commercial architectural style
- Since its construction, the building has served as a showroom, a bakery, and a car salesman's office. It would become a restaurant in the 1940's

Recommendation for Designation

- Design/Physical Value
 - The property has design value or physical value because it is a rare, unique, representative, or early example of a style, type, expression, material, or construction method
- Contextual Value
 - The property has contextual value because it is important in defining, maintaining, or supporting the character of an area

22 King St. W, I.O.O.F Building

- Designed by Thomas Jenner in September 1912 and built in 1916
- The Independent Order of Odd Fellows (I.O.O.F) of Harrow were established in the early 1880's, receiving their charter on May 15th, 1894
- The buildings on the corner of King and Queen St. burnt down in the early 1900's and the lot remained vacant until 1912 when it was purchased by the I.O.O.F



Recommendation for Designation

- **Historical/Associative Value**
 - The property has historical value or associative value because it has direct associations with a theme, event, belief, person, activity, organization or institution that is significant to a community.
 - The property has historical value or associative value because it demonstrates or reflects the work or ideas of an architect, artist, builder, designer or theorist who is significant to a community.
- **Contextual Value**
 - The property has contextual value because it is important in defining, maintaining, or supporting the character of an area

314 Queen St., Station Master's House



- Built in early 1897 by Micheal P. O'Connor, the 2nd Harrow Lake Erie, Essex, & Detroit River Railway (L.E.E.D.R.R) Station Master
- Built in a Victorian architectural style using materials from local brickyards
- Located next to the former L.E.E.D.R.R tracks and station
- The L.E.E.D.R.R was a railway system that was built by Hiram Walker and connected Walkerville, Harrow, and Kingsville

Recommendation for Designation

- Design/Physical Value
 - The property has design value or physical value because it is a rare, unique, representative, or early example of a style, type, expression, material, or construction method
- Contextual Value
 - The property has contextual value because it is important in defining, maintaining, or supporting the character of an area

Discussion & Questions