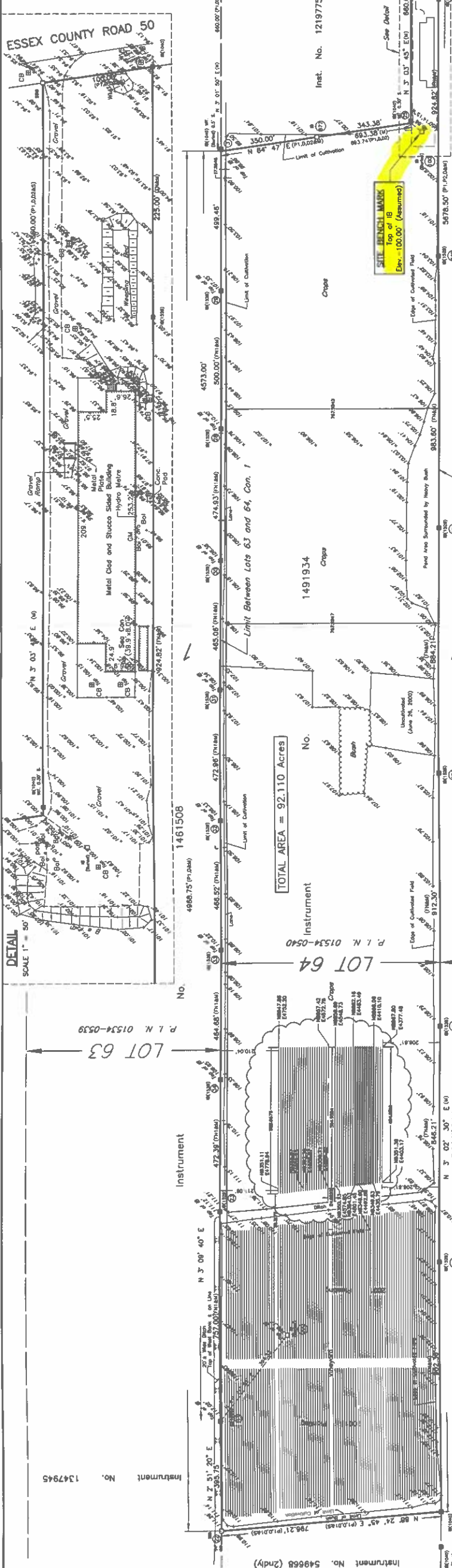


**SURVEYOR'S REAL PROPERTY REPORT
PART 1 - THE PLAN**

ASSOCIATION OF ONTARIO
LAND SURVEYORS
PLAN NUMBER / FIRM
1359858



THIS PLAN IS NOT VALID
UNLESS IT IS ACCOMPANIED BY
THE ORIGINAL COPY
ISSUED BY THE SURVEYOR
REGISTERED UNDER THE
REGULATIONS, 1995, UNDER R.O.



ESSEX COUNTY ROAD No. 50
N 64° 47' E (REFERENCE BEARING)
684.16' (P.12848)

Inst. No. 1219775

Site BENCHMARK
Top of 18"
Exp. -100.00' (Assumed)

Limit of Cultivation

Limit Between Lots 64 and 65, Con. 1

Limit Between Lots 63 and 64, Con. 1

Limit Between Lots 64 and 65, Con. 2

Limit Between Lots 64 and 65, Con. 3

Limit Between Lots 64 and 65, Con. 4

Limit Between Lots 64 and 65, Con. 5

Limit Between Lots 64 and 65, Con. 6

Limit Between Lots 64 and 65, Con. 7

Limit Between Lots 64 and 65, Con. 8

Limit Between Lots 64 and 65, Con. 9

Limit Between Lots 64 and 65, Con. 10

Limit Between Lots 64 and 65, Con. 11

Limit Between Lots 64 and 65, Con. 12

Limit Between Lots 64 and 65, Con. 13

Limit Between Lots 64 and 65, Con. 14

Limit Between Lots 64 and 65, Con. 15

Limit Between Lots 64 and 65, Con. 16

Limit Between Lots 64 and 65, Con. 17

Limit Between Lots 64 and 65, Con. 18

Limit Between Lots 64 and 65, Con. 19

Limit Between Lots 64 and 65, Con. 20

Limit Between Lots 64 and 65, Con. 21

Limit Between Lots 64 and 65, Con. 22

Limit Between Lots 64 and 65, Con. 23

Limit Between Lots 64 and 65, Con. 24

Limit Between Lots 64 and 65, Con. 25

Limit Between Lots 64 and 65, Con. 26

Limit Between Lots 64 and 65, Con. 27

Limit Between Lots 64 and 65, Con. 28

Limit Between Lots 64 and 65, Con. 29

Limit Between Lots 64 and 65, Con. 30

Limit Between Lots 64 and 65, Con. 31

Limit Between Lots 64 and 65, Con. 32

Limit Between Lots 64 and 65, Con. 33

Limit Between Lots 64 and 65, Con. 34

Limit Between Lots 64 and 65, Con. 35

Limit Between Lots 64 and 65, Con. 36

Limit Between Lots 64 and 65, Con. 37

Limit Between Lots 64 and 65, Con. 38

Limit Between Lots 64 and 65, Con. 39

Limit Between Lots 64 and 65, Con. 40

Limit Between Lots 64 and 65, Con. 41

Limit Between Lots 64 and 65, Con. 42

Limit Between Lots 64 and 65, Con. 43

Limit Between Lots 64 and 65, Con. 44

Limit Between Lots 64 and 65, Con. 45

Limit Between Lots 64 and 65, Con. 46

Limit Between Lots 64 and 65, Con. 47

Limit Between Lots 64 and 65, Con. 48

Limit Between Lots 64 and 65, Con. 49

Limit Between Lots 64 and 65, Con. 50

Limit Between Lots 64 and 65, Con. 51

Limit Between Lots 64 and 65, Con. 52

Limit Between Lots 64 and 65, Con. 53

Limit Between Lots 64 and 65, Con. 54

Limit Between Lots 64 and 65, Con. 55

Limit Between Lots 64 and 65, Con. 56

Limit Between Lots 64 and 65, Con. 57

Limit Between Lots 64 and 65, Con. 58

Limit Between Lots 64 and 65, Con. 59

Limit Between Lots 64 and 65, Con. 60

Limit Between Lots 64 and 65, Con. 61

Limit Between Lots 64 and 65, Con. 62

Limit Between Lots 64 and 65, Con. 63

Limit Between Lots 64 and 65, Con. 64

Limit Between Lots 64 and 65, Con. 65

Limit Between Lots 64 and 65, Con. 66

Limit Between Lots 64 and 65, Con. 67

Limit Between Lots 64 and 65, Con. 68

Limit Between Lots 64 and 65, Con. 69

Limit Between Lots 64 and 65, Con. 70

Limit Between Lots 64 and 65, Con. 71

Limit Between Lots 64 and 65, Con. 72

Limit Between Lots 64 and 65, Con. 73

Limit Between Lots 64 and 65, Con. 74

Limit Between Lots 64 and 65, Con. 75

Limit Between Lots 64 and 65, Con. 76

Limit Between Lots 64 and 65, Con. 77

Limit Between Lots 64 and 65, Con. 78

Limit Between Lots 64 and 65, Con. 79

Limit Between Lots 64 and 65, Con. 80

Limit Between Lots 64 and 65, Con. 81

Limit Between Lots 64 and 65, Con. 82

Limit Between Lots 64 and 65, Con. 83

Limit Between Lots 64 and 65, Con. 84

Limit Between Lots 64 and 65, Con. 85

Limit Between Lots 64 and 65, Con. 86

Limit Between Lots 64 and 65, Con. 87

Limit Between Lots 64 and 65, Con. 88

Limit Between Lots 64 and 65, Con. 89

Limit Between Lots 64 and 65, Con. 90

Limit Between Lots 64 and 65, Con. 91

Limit Between Lots 64 and 65, Con. 92

Limit Between Lots 64 and 65, Con. 93

Limit Between Lots 64 and 65, Con. 94

Limit Between Lots 64 and 65, Con. 95

Limit Between Lots 64 and 65, Con. 96

Limit Between Lots 64 and 65, Con. 97

Limit Between Lots 64 and 65, Con. 98

Limit Between Lots 64 and 65, Con. 99

Limit Between Lots 64 and 65, Con. 100

PLAN OF SURVEY
OF
PART OF LOT 64, CONCESSION 1
GEOGRAPHIC TOWNSHIP OF COLCHESTER SOUTH
NOW IN THE
TOWN OF ESSEX
COUNTY OF ESSEX, ONTARIO
© VERHAEGEN LAND SURVEYORS, A DIVISION OF J.D. BARNES LTD.

SCALE: 1" = 200'

FEET
0 100.0 200.0 400.0 600.0 1000.0

DATE: JULY 30, 2001.
UPDATED: APRIL 12, 2023.

SURVEYOR'S CERTIFICATE
I CERTIFY THAT:
1. THIS SURVEY AND PLAN ARE CORRECT AND IN ACCORDANCE WITH THE SURVEYS ACT,
THE SURVEYORS ACT AND THE REGULATIONS MADE UNDER THEM.
2. THIS SURVEY WAS COMPLETED ON THE 23rd, DAY OF JULY, 2001.

ALBERT
ALEX S. MARTIN
ONTARIO LAND SURVEYOR

DRIVEN BY: GJM
CHECKED BY: AM
REFERENCE NO.: 23-48-007-00
CAD FILE: 23-47-007-00.dwg
CAD Date: April 18th, 2023

REM. OF PART 2
Instrument No. 1125377
PLAN 12R-4299
No. 125377

BEARING REFERENCE
ALL BEARINGS ARE REFERRED TO THE MAGNETIC MERIDIAN OF
ESSEX COUNTY ROAD No. 50 AS SHOWN ON P.L.N. 01534-2, RECD.
AS INST. NO. 148020 AND HAVING A BEARING OF N 84° 47' E.

NOTE
NEW ROWS OF GROUPE ARE 8.17' APART.

LEGEND
1" x 1" x 4"-0" STANDARD IRON BAR
DENOTES 9/8" x 5/8" x 2"-0" SHORT STANDARD IRON BAR
DENOTES SURVEY MONUMENT FOUND AND MARKED 1528
DENOTES SURVEY MONUMENT SET AND MARKED 1528
DENOTES SET PROPORTIONALLY (61) DENOTES MEASURED
DENOTES INST. NO. 1481824 (62) DENOTES ORION UNKNOWN
DENOTES FIELD NOTES BY (1528) DATED APRIL 17, 1990 (NO 4-05929)
DENOTES FIELD NOTES BY (1528) DATED JUNE 18, 1998 (NO 5-08110)
DENOTES PLAN 12R-4299 BY (1040) DATED DEC. 5, 1973 (254462)
DENOTES VERHAEGEN STUBBSFIELD HARTLEY BREWER BEZARE INC., O.L.S.
DENOTES WILLIAM J. FERGUSON, O.L.S.
DENOTES VERHAEGEN LAND SURVEYORS, A DIVISION OF J.D. BARNES LTD., O.L.S.
DENOTES CO-ORDINATE NUMBER FOR IRON BAR INDICATED
(SEE CO-ORDINATE LIST WITH SURVEY REPORT)

THIS PLAN MUST BE READ IN CONJUNCTION WITH
PART 2, THE REPORTING LETTER DATED JULY 30, 2001
THIS REPORT WAS PREPARED FOR JOHN FARGUS.

ASSOCIATION OF ONTARIO
LAND SURVEYORS
PLAN NUMBER / FIRM
1359858

VERHAEGEN
LAND SURVEYORS
O.L.S.
A DIVISION OF J.D. BARNES LTD.
940 TAVARA STREET, WINDSOR, ON, N9A 2E1
T: (519) 258-1772 F: (519) 258-1791
www.verhaegen.com