

GENERAL CONDITIONS

*DESIGN AND CONSTRUCTION SHALL CONFORM TO ONTARIO BUILDING CODE (O.B.C) CURRENT EDITION AND ANY LOCAL CODES.

*ALL LIGHTING AND ELECTRICAL TO COMPLY WITH O.B.C. 9.34

* MECHANICAL TO VERIFY ALL APPLIANCE LOCATIONS

* SMOKE DETECTORS ARE REQUIRED ON EACH FLOOR LEVEL AND IN EVERY BEDROOM AND TO BE INTERCONNECTED

* ALL NON BEARING PARTITIONS TO BE SUPPORTED BY DOUBLE FLOOR JOISTS OR SOLID BLOCKING AT 3'-11" O.C..

* ALL BEAMS TO HAVE MIN 3-1/2" END BEARING AND MASONRY LINTELS TO HAVE MIN 5-7/8" END BEARING BEAM AND POINTS LOADS TO BE SUPPORTED FULL WIDTH TO FOUNDATION.

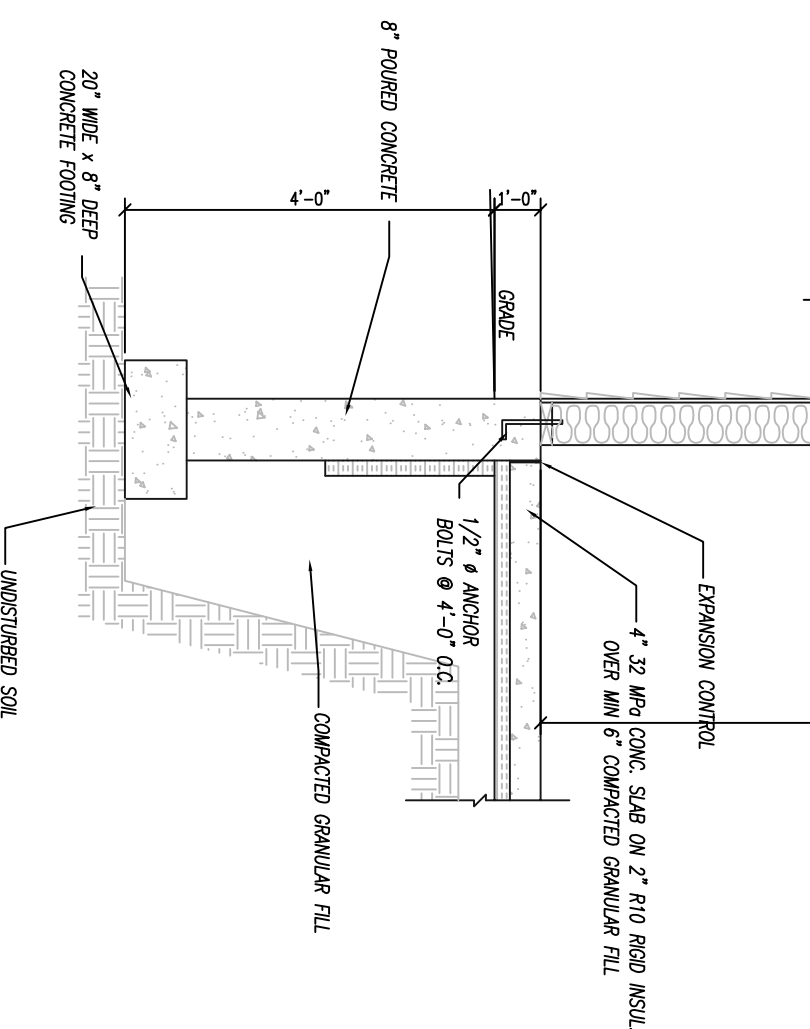
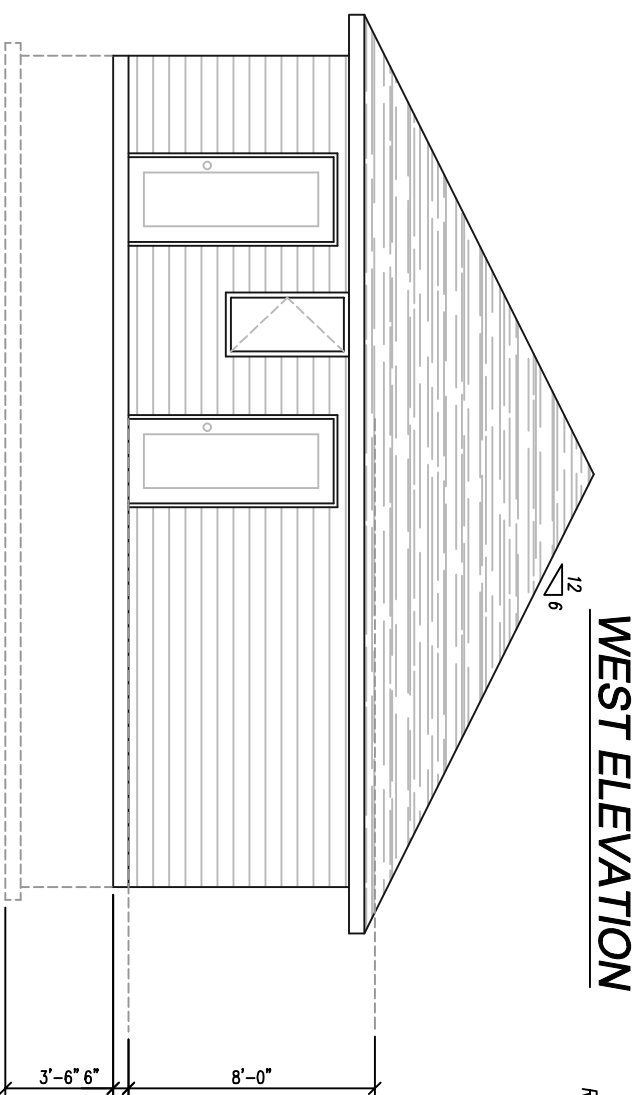
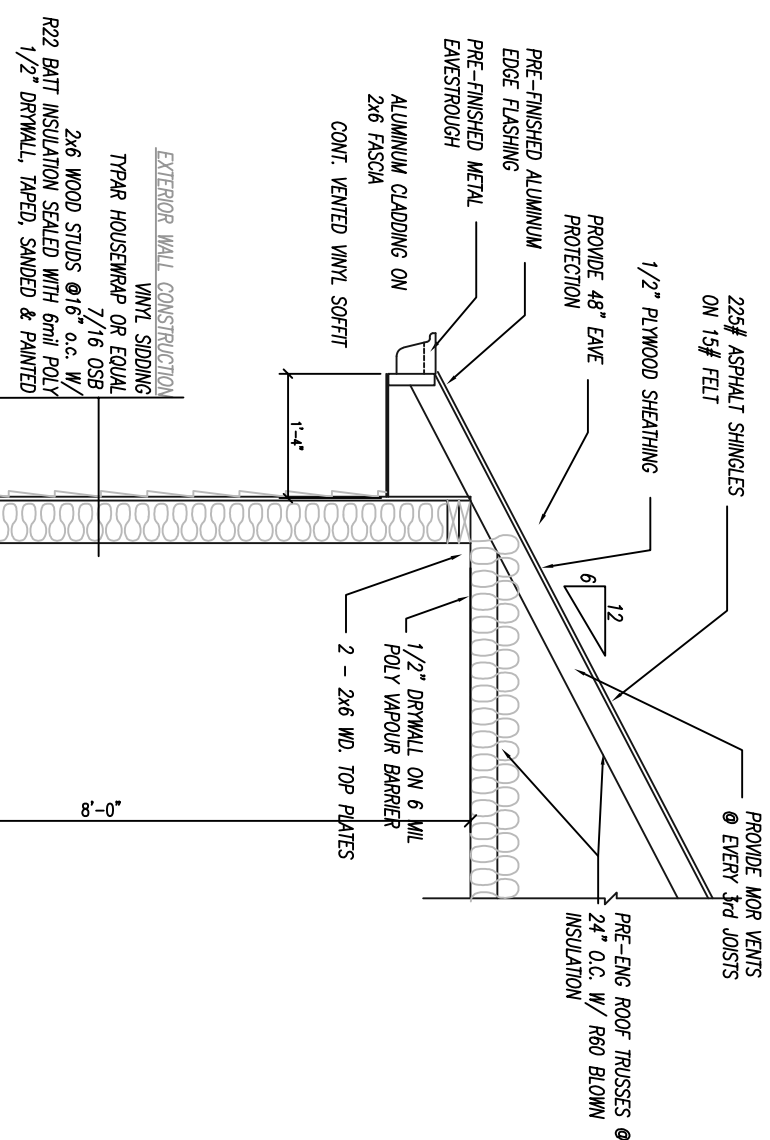
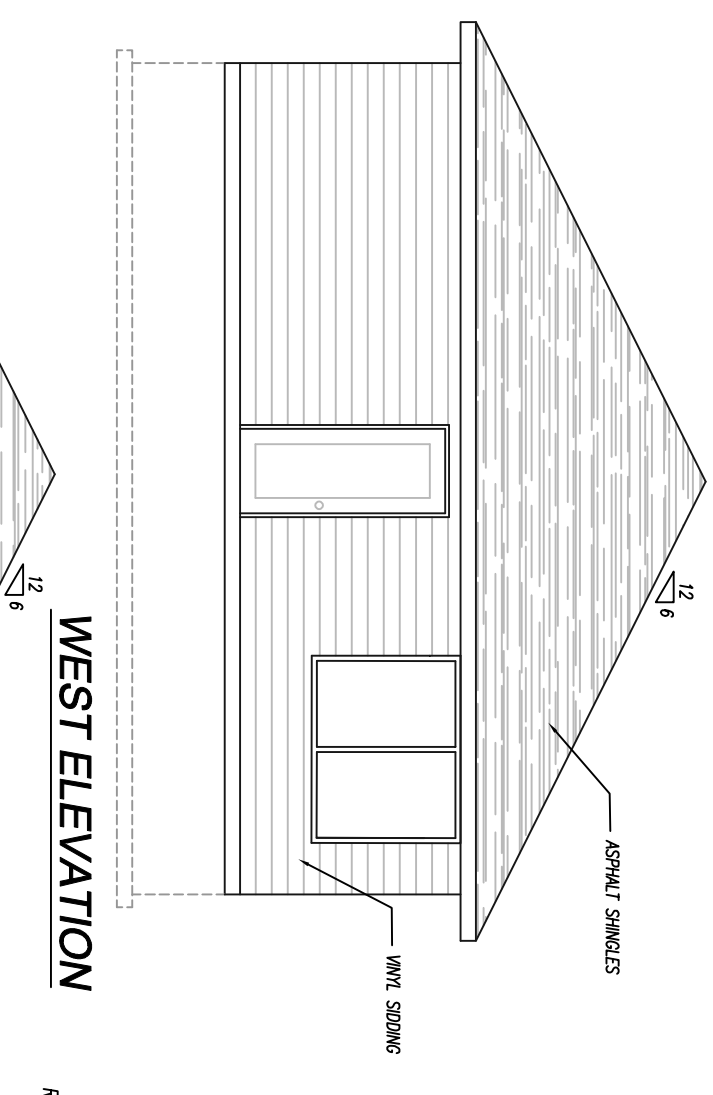
*HEADROOM UNDER DUCTS AND BEAMS MIN 6'8"

*RANGE HOODS TO BE VENTED TO EXTERIOR WITH NON COMBUSTIBLE DUCTS

*PRE-ENGINEERED WOOD I JOISTS AND ROOF TRUSSES TO BE INSTALLED ACCORDING TO MANUFACTURERS SPECIFICATIONS.

*PROVIDE STAMPED SHOP DRAWINGS BY A PROFESSIONAL ENGINEER OF ONTARIO FOR REVIEW BY DESIGNER PRIOR TO START OF MANUFACTURING

* FOOTING ARE TO BE POURED ON UNDISTURBED SOIL WITH MIN BEARING CAPACITY OF 75MPA



VIEW POINTE RESIDENCE

1620 SQ.FT.

DRAWING TITLE:

ELE/SECTION

A3 OF A4