

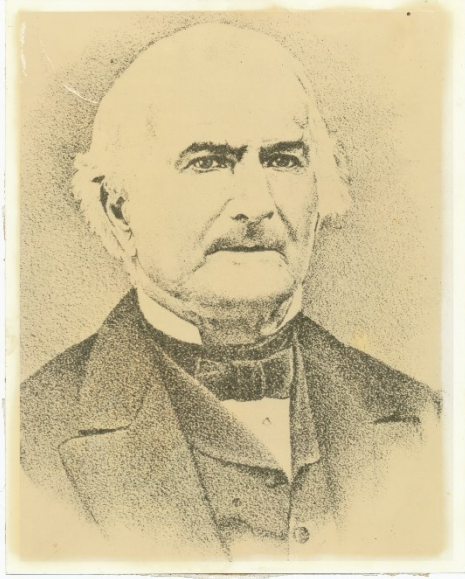
# John R. Park Homestead Heritage Center



Essex Region  
Conservation Authority  
*sustaining the place for life*



# John R. Park Homestead Heritage Centre



- Unique original early settler Homestead site featuring 1842 home and ten period outbuildings
- Park Family and Fox Family agricultural and manufacturing histories
- Human and natural history of the Essex Region
- The only living history, agricultural museum west of London, ON



# John R. Park Homestead Heritage Centre



- Welcomes more than 14,000 students and visitors annually
- 4,000 visitors during the 30 day maple syrup season
- Additional features: nature trail, heritage orchard, early settler kitchen garden, and native plant garden.
- Over 90 volunteers, contributing over 4400 hours of time and talent per year (=2.5 FTE)





# John R. Park Homestead Heritage Centre

- Knowledge sharing workshops in traditional skills: basket weaving, wood carving, blacksmithing, etc.
- Valuable employment opportunities for local students
- Active livestock program and public education/engagement opportunities



# John R. Park Homestead Heritage Center

- Reflect the existing historical buildings in style and provide an unobstructed view of the grounds and lake
- Use environmental sustainable materials and design (including water/wastewater reuse, energy, building materials and renewable energy)
- Be fully accessible
- Have a flexible, multipurpose space that can accommodate school groups, event visitors, exhibits, general day-use visitors, and small rentals
- Include a connected outdoor space to accommodate events and alternative classroom environments
- Include spaces for office and gift shop





# John R. Park Homestead Heritage Centre



# John R. Park Homestead Heritage Centre

7.9 - The AT Committee, County, Local Municipalities, ERAC and respective partners should make the development of end-of-trip facilities a priority during the planning and implementation of active transportation facilities.

7.10 – Create partnerships with local public and private organizations and integrate end-of-trip facilities into active transportation promotional strategies and initiatives.





# John R. Park Homestead Heritage Centre





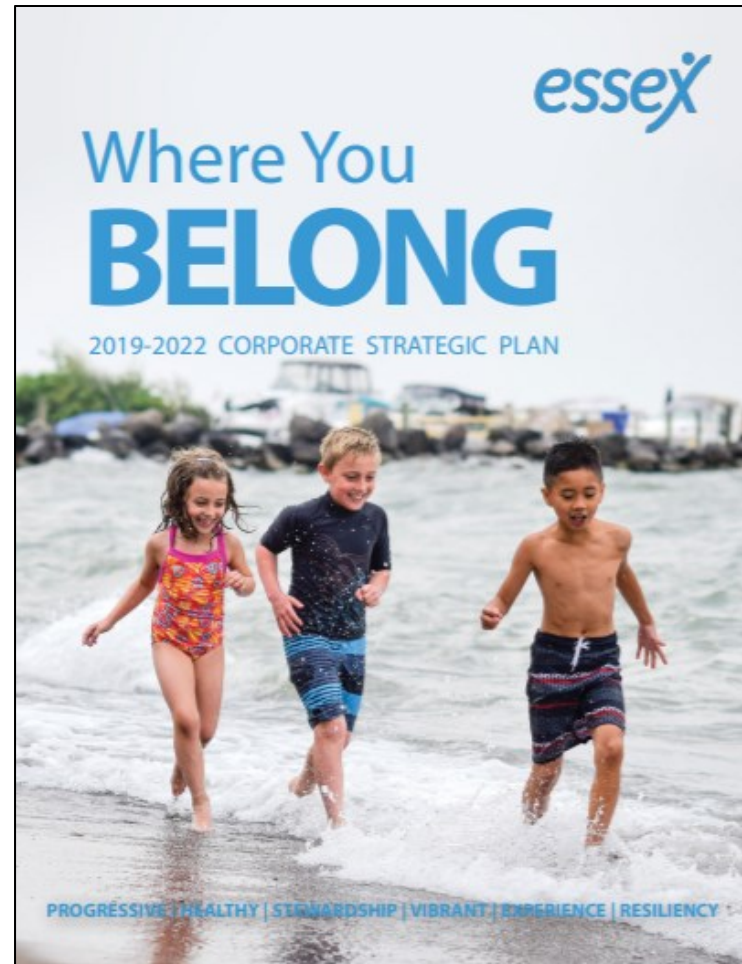
# John R. Park Homestead Heritage Centre



Colchester and County Road 50  
Community Improvement Plan  
Implementation Strategy  
April 2018



(Revised July 2019)



# John R. Park Homestead Heritage Centre





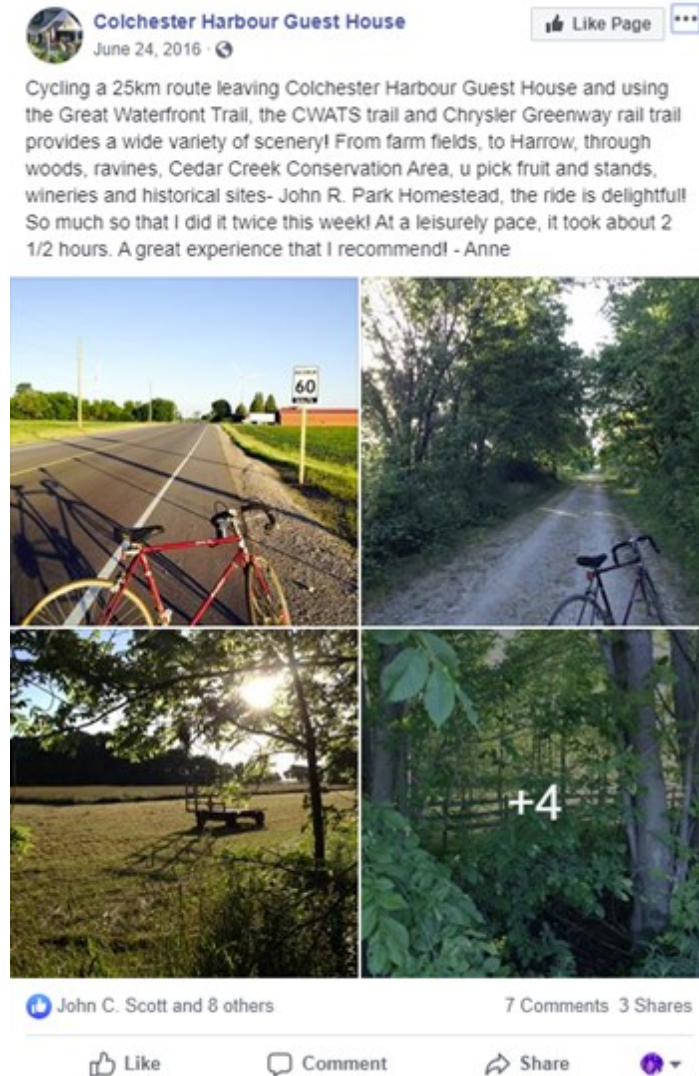
# John R. Park Homestead Heritage Centre

- Strong partner in Explore the Shore
- Public Washrooms
- Lakefront Access
- No admission charge except for events
- Developed partnerships with local businesses
- Customer Service Oriented Staff



# John R. Park Homestead Heritage Centre

- Strong partner in Explore the Shore
- Public Washrooms
- Lakefront Access
- No admission charge except for events
- Developed partnerships with local businesses
- Customer Service Oriented Staff





# Our Request: \$100,000

- In support of the construction of a tourism hub in partnership with Tourism Windsor Essex Pelee Island with trained staff able to promote area attractions, festivals, restaurants, wineries, stores and more.





**Thank You**

